

JUDEȚUL BACĂU
CONSILIUL LOCAL AL ORAȘULUI
COMĂNEȘTI

HOTĂRÂRE

privind aprobarea Organigramei și a Statului de funcții la Spitalul orășenesc „IOAN LASCĂR” Comănești

Consiliul Local al orașului Comănești, județul Bacău, întrunit în ședința ordinară din data de 27.02.2026;

Având în vedere:

- Adresa nr. 20027/18.02.2026 a Spitalului orășenesc „Ioan Lascăr,, Comănești prin care se solicită aprobarea Organigramei și a Statului de funcții la Spitalul Orășenesc „IOAN LASCĂR” Comănești;
- Referat de aprobare nr. 20028/A/18.02.2026 al Primarului orașului Comănești;
- Raportul de specialitate nr. 20028/B/18.02.2026 al Compartimentului Resurselor Umane și Compartimentului de Management al Unităților de Asistență medicală, prin care propune aprobarea Organigramei și a Statului de funcții la Spitalul Orășenesc „IOAN LASCĂR” Comănești;
- Avizele Comisiilor de specialitate din cadrul Consiliului Local;

În conformitate cu prevederile:

- Hotărârea de guvern nr. 56/2009 art. (15) lit. (b) și (c) pentru aprobarea Normelor metodologice de aplicare a Ordonanței de urgență a Guvernului nr. 162/2008 privind transferul ansamblului de atribuții și competențe exercitate de Ministerul Sănătății către autoritățile administrației publice locale;
- Ordin nr. 1224/2010 - privind aprobarea normativelor de personal pentru asistența medicală spitalicească, precum și pentru modificarea și completarea Ordinului ministrului sănătății publice nr. 1.778/2006 privind aprobarea normativelor de personal, cu modificările și completările ulterioare;
- Ordinului M.S.1706/2007 privind conducerea și organizarea unităților și compartimentelor de primire a urgențelor cu modificările și completările ulterioare;
- Ordinul nr. 1101/2016 privind aprobarea Normelor de supraveghere, prevenire și limitare a infecțiilor asociate asistenței medicale în unitățile sanitare;
- Ordinul nr. 1500/2009 privind organizarea și funcționarea secțiilor de ATI, cu modificările și completările ulterioare

- Legea 95/2006 – privind reforma în domeniul sănătății, cu modificările și completările ulterioare
- Ordonanța de urgență nr. 162/2008 – privind transferul ansamblului de atribuții și competențe exercitate de Ministerul Sănătății Publice către autoritățile administrației publice locale;
- Legea cadru nr. 153/2017 – privind salarizarea personalului platit din fonduri publice cu modificările și completările ulterioare;
- Aviz MS nr AFR2261/10.02.2026

În temeiul art. 129 alin. 2 lit. a), art 136 alin 1 și 2, art. 139 alin 1, art 196, alin 1, lit a) și art. 197 din Ordonanța de urgență nr. 57/2019 privind Codul Administrativ cu modificările și completările ulterioare, adoptă următoarea:

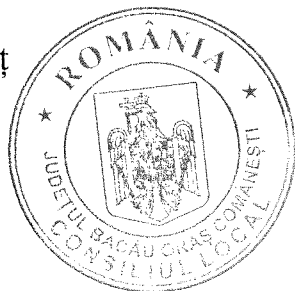
HOTĂRÂRE

Art.1 Consiliul Local al Orașului Comănești aprobă Organigrama și Statul de funcții la Spitalul Orașenesc „IOAN LASCĂR” Comănești, conform anexelor nr. 1 și 2, parte integrantă din prezenta hotărâre.

Art.2 Hotărârea Consiliului Local nr. 76/28.08.2025 privind aprobarea modificării Statului de funcții și a Organigramei la Spitalul orașenesc „Ioan Lascăr” Comănești își încetează aplicabilitatea începând cu data prezentei.

Art.3 Prezenta hotărâre va fi comunicată Instituției Prefectului Județului Bacău, Primarului orașului Comănești, Spitalului orașenesc „Ioan Lascăr” Comănești, Serviciilor Compartimentelor interesate din cadrul U.A.T. Orașul Comănești, pentru ducere la îndeplinire, cu drept de contestație în termen de 30 de zile la Tribunalul Bacău:

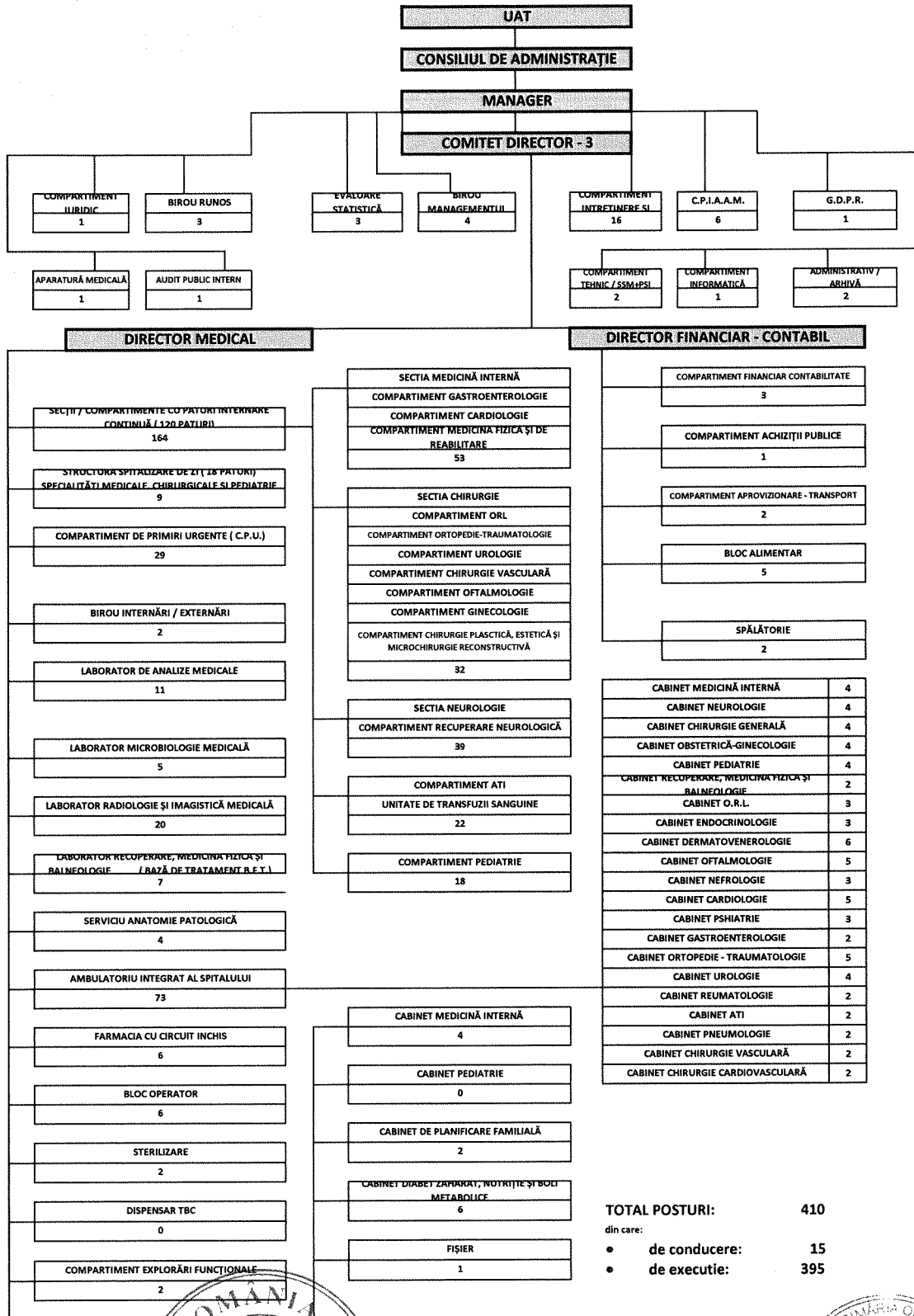
**Președinte de ședință,
Consilier local,
Cozma Florin Ionuț**



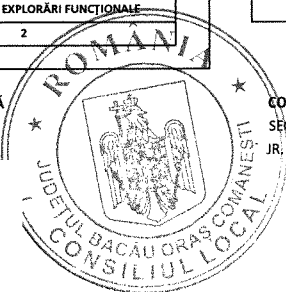
**Contrasemnează,
Secretar general
jurist Daniela Chirilă**

Nr. 15
Din 27.02.2026

ORGANIGRAMA (01.03.2026)



PREȘEDINTE DE ȘEDINȚĂ
CONSILIER LOCAL
COZMA FLORIN IONUȚ



CONTRASEMNEAZĂ
SECRETAR GENERAL
JR. DANIELA CHIRILĂ

MANAGER
EC. OLARU CONSTANTIN



STAT FUNCȚII (01.03.2026)

NR. CRT.	DENUMIREA FUNCȚIEI CONFORM LEGII NR. 153/2017	SPECIALITATEA	NIVEL STUDII	NR. POSTURI
COMPARTIMENT ADMINISTRATIV				
<i>APROBAT=</i> 3,0				
1	REFERENT	FISIER	M	1,0
2	SECRETAR-DACTIL. IA	SECRETAR-DACTIL. IA	M	1,0
3	ARHIVAR	ARHIVAR I CLS22-GR5-	M	1,0
COMPARTIMENT APARATURĂ MEDICALĂ				
<i>APROBAT=</i> 1,0				
4	BIOINGINER MEDICAL	BIOINGINER MEDICAL	S	1,0
B.M.C.S.S.S.P.				
<i>APROBAT=</i> 4,0				
5	MEDIC SPECIALIST/PRIMAR	ALTA SPECIALITATE	S	1,0
6	MANAGER DE CALITATE	ALTA SPECIALITATE	S	1,0
7	CONSILIER	ALTA SPECIALITATE	S	1,0
8	REF./REF. SPEC./CONSILIER	ALTA SPECIALITATE	S	1,0
BIROU STATISTICA SI EVALUARE				
<i>APROBAT=</i> 3,0				
9	REFERENT DE SPECIALITATE	ALTA SPECIALITATE	S	1,0
10	REFERENT DE SPECIALITATE	ALTA SPECIALITATE	S	1,0
11	REFERENT DE SPECIALITATE	ALTA SPECIALITATE	S	1,0
BLOC ALIMENTAR				
<i>APROBAT=</i> 5,0				
12	MUNCITOR I	BUCATAR	M	1,0
13	MUNCITOR I	BUCATAR	M	1,0
14	MUNCITOR I	BUCATAR	M	1,0
15	ASISTENT MEDICAL DEBUTANT/ MEDICAL	NUTRIȚIE ȘI DIETETICA	PL	1,0
16	INGRIJITOR	ALTA SPECIALITATE	G	1,0
BLOC OPERATOR				
<i>APROBAT=</i> 6,0				
17	ASISTENT/AS. PRINCIPAL	MEDICALA	PL	1,0
18	ASISTENT/AS. PRINCIPAL	MEDICALA	PL	1,0
19	ASISTENT/AS. PRINCIPAL	MEDICALA	PL	1,0
20	BRANCARDIER	ALTA SPECIALITATE	M	1,0
21	INFIRMIER	ALTA SPECIALITATE	M	1,0
22	INGRIJITOR	ALTA SPECIALITATE	G	1,0
CABINET CARDIOLOGIE				
<i>APROBAT=</i> 5,0				
23	MEDIC SPECIALIST/PRIMAR	CARDIOLOGIE	S	1,0
24	MEDIC SPECIALIST/PRIMAR	CARDIOLOGIE	S	1,0
25	MEDIC REZIDENT AN III	CARDIOLOGIE	S	1,0
26	ASISTENT/AS. PRINCIPAL	MEDICALA	PL	1,0
27	ASISTENT/AS. PRINCIPAL	MEDICALA	PL	1,0
CABINET CHIRURGIE GENERALA				
<i>APROBAT=</i> 4,0				
28	MEDIC SPECIALIST/PRIMAR	CHIRURGIE GENERALA	S	1,0
29	MEDIC SPECIALIST/PRIMAR	CHIRURGIE GENERALA	S	1,0
30	ASISTENT/AS. PRINCIPAL	MEDICALA	PL	1,0
31	ASISTENT/AS. PRINCIPAL	MEDICALA	PL	1,0
CABINET DERMATOVENEROLOGIE				
<i>APROBAT=</i> 6,0				
32	MEDIC SPECIALIST/PRIMAR	DERMATOLOGIE	S	1,0
33	MEDIC REZIDENT AN III	DERMATOLOGIE	S	1,0
34	MEDIC REZIDENT AN III	DERMATOLOGIE	S	1,0
35	MEDIC SPECIALIST/PRIMAR	DERMATOLOGIE	S	1,0

36	ASISTENT/AS. PRINCIPAL	MEDICALA	PL	1,0
37	ASISTENT/AS. PRINCIPAL	MEDICALA	PL	1,0

CABINET DIABET ZAHARAT, BOLI NUTRIȚIE ȘI METABOLISM

APROBAT=

6,0

38	MEDIC REZIDENT AN IV	DIABET ZAHARAT	S	1,0
39	MEDIC SPECIALIST/PRIMAR	DIABET ZAHARAT	S	1,0
40	MEDIC SPECIALIST/PRIMAR	DIABET ZAHARAT	S	1,0
41	ASISTENT/AS. PRINCIPAL	MEDICALA	PL	1,0
42	ASISTENT/AS. PRINCIPAL	MEDICALA	PL	1,0
43	MEDIC REZIDENT AN V	DIABET ZAHARAT	S	1,0

CABINET ENDOCRINOLOGIE

APROBAT=

3,0

44	MEDIC SPECIALIST/PRIMAR	MEDICALA	S	1,0
45	MEDIC REZIDENT AN III	MEDICALA	S	1,0
46	ASISTENT/AS. PRINCIPAL	MEDICALA	PL	1,0

COMPARTIMENT EXPORARI FUNCTIONALE

APROBAT=

2,0

47	MEDIC SPECIALIST/PRIMAR	MEDICALA	S	1,0
48	ASISTENT/AS. PRINCIPAL	MEDICALA	PL	1,0

CABINET GASTROENTEROLOGIE

APROBAT=

2,0

49	MEDIC SPECIALIST/PRIMAR	GASTROENTEROLOGIE	S	1,0
50	ASISTENT/AS. PRINCIPAL	MEDICALA	PL	1,0

CABINET MEDICINĂ INTERNĂ (asigură și urgențele)

APROBAT=

4,0

51	MEDIC SPECIALIST/PRIMAR	CAB. MEDICINA INTERNA	S	1,0
52	MEDIC PRIMAR/SPECIALIST	CAB. MEDICINA INTERNA	S	1,0
53	ASISTENT/AS. PRINCIPAL	MEDICALA	PL	1,0
54	ASISTENT/AS. PRINCIPAL	MEDICALA	PL	1,0

CABINET MEDICINĂ INTERNĂ

APROBAT=

4,0

55	MEDIC SPECIALIST/PRIMAR	CAB. MEDICINA INTERNA	S	1,0
56	MEDIC PRIMAR/SPECIALIST	CAB. MEDICINA INTERNA	S	1,0
57	ASISTENT/AS. PRINCIPAL	MEDICALA	PL	1,0
58	ASISTENT/AS. PRINCIPAL	MEDICALA	PL	1,0

CABINET NEFROLOGIE

APROBAT=

3,0

59	MEDIC SPECIALIST/PRIMAR	NEFROLOGIE	S	1,0
60	MEDIC REZIDENT AN I	NEFROLOGIE	S	1,0
61	ASISTENT/AS. PRINCIPAL	NEFROLOGIE	PL	1,0

CABINET NEUROLOGIE

APROBAT=

4,0

62	MEDIC REZIDENT AN III	NEUROLOGIE	S	1,0
63	MEDIC REZIDENT AN IV	NEUROLOGIE	S	1,0
64	MEDIC SPECIALIST/PRIMAR	NEUROLOGIE	S	1,0
65	ASISTENT / ASISTENT PRINCIPAL	MEDICALA	PL	1,0

CABINET O.R.L.

APROBAT=

3,0

66	MEDIC PRIMAR/ SPECIALIST	O.R.L.	S	1,0
67	MEDIC REZIDENT AN IV	O.R.L.	S	1,0
68	ASISTENT PRINCIPAL	MEDICALA	PL	1,0

CABINET OBSTETRICĂ-GINECOLOGIE

APROBAT=

4,0

69	MEDIC SPECIALIST/PRIMAR	OBSTETRICA GINEC.	S	1,0
70	MEDIC REZIDENT AN III	OBSTETRICA GINEC.	S	1,0
71	MEDIC SPECIALIST/PRIMAR	OBSTETRICA GINEC.	S	1,0
72	ASISTENT/ASISTENT PRINCIPAL	OBSTETRICA	PL	1,0

CABINET OFTALMOLOGIE

APROBAT=

5,0

73	MEDIC SPECIALIST	OFTALMOLOGIE	S	1,0
74	MEDIC SPECIALIST/PRIMAR	OFTALMOLOGIE	S	1,0
75	MEDIC SPECIALIST/PRIMAR	OFTALMOLOGIE	S	1,0
76	ASISTENT/ASIST.PRINCIPAL	MEDICALA	PL	1,0
77	ASISTENT/ASIST.PRINCIPAL	MEDICALA	PL	1,0

CABINET ORTOPEDIE

APROBAT=

5,0

78	MEDIC REZIDENT AN III	ORTOPEDIE	S	1,0
----	-----------------------	-----------	---	-----

79	MEDIC SPECIALIST/PRIMAR	ORTOPEDIE	S	1,0
80	MEDIC SPECIALIST/PRIMAR	ORTOPEDIE	S	1,0
81	ASISTENT/ASISTENT PRINCIPAL	MEDICALA	PL	1,0
82	ASISTENT/ASISTENT PRINCIPAL	MEDICALA	PL	1,0

CABINET PEDIATRIE

APROBAT=

4,0

83	MEDIC REZIDENT AN IV	PEDIATRIE	S	1,0
84	MEDIC SPECIALIST/PRIMAR	PEDIATRIE	S	1,0
85	ASISTENT/ASIST.PRINCIPAL	PEDIATRIE	PL	1,0
86	ASISTENT/ASIST.PRINCIPAL	PEDIATRIE	PL	1,0

CABINET PLANIFICARE FAMILIALĂ

APROBAT=

2,0

87	MEDIC SPECIALIST	OBSTETRICA GINEC.	S	1,0
88	ASISTENT/AS. PRINCIPAL	OBSTETRICA GINEC.	PL	1,0

CABINET PSIHIATRIE

APROBAT=

3,0

89	MEDIC SPECIALIST/PRIMAR	PSIHIATRIE	S	1,0
90	MEDIC REZIDENT AN V	PSIHIATRIE	S	1,0
91	ASISTENT/ASIST.PRINCIPAL	MEDICALA	PL	1,0

CABINET UROLOGIE

APROBAT=

4,0

92	MEDIC SPECIALIST/PRIMAR	UROLOGIE	S	1,0
93	MEDIC SPECIALIST/PRIMAR	UROLOGIE	S	1,0
94	ASISTENT/ASIST.PRINCIPAL	GENERAL	PL	1,0
95	ASISTENT/ASIST.PRINCIPAL	GENERAL	PL	1,0

CABINET B.F.T.

APROBAT=

2,0

96	MEDIC PRIMAR/SPECIALIST	BFT	S	1,0
97	ASISTENT/ASIST.PRINCIPAL	GENERAL	PL	1,0

CABINET PNEUMOLOGIE

APROBAT=

2,0

98	MEDIC PRIMAR/SPECIALIST	PNEUMOLOGIE	S	1,0
99	ASISTENT/ASIST.PRINCIPAL	GENERAL	PL	1,0

CABINET CHIRURGIE CARDIOVASCULARA

APROBAT=

2,0

100	MEDIC PRIMAR/SPECIALIST	CHIRURGIE CARDIOVASCULARA	S	1,0
101	ASISTENT/ASIST.PRINCIPAL	GENERAL	PL	1,0

CABINET A.T.I.

APROBAT=

2,0

102	MEDIC PRIMAR/SPECIALIST	A.T.I.	S	1,0
103	ASISTENT/ASIST.PRINCIPAL	GENERAL	PL	1,0

CABINET CHIRURGIE VASCULARA

APROBAT=

2,0

104	MEDIC PRIMAR/SPECIALIST	CHIRURGIE VASCULARA	S	1,0
105	ASISTENT/ASIST.PRINCIPAL	GENERAL	PL	1,0

CABINET REUMATOLOGIE

APROBAT=

2,0

106	MEDIC PRIMAR/SPECIALIST	REUMATOLOGIE	S	1,0
107	ASISTENT/ASIST.PRINCIPAL	GENERAL	PL	1,0

PERSONAL COMUN AMBULATOR

APROBAT=

2,0

108	ÎNGRIJITOR	ALTA SPECIALITATE	M	1,0
109	ÎNGRIJITOR	ALTA SPECIALITATE	M	1,0

COMPARTIMENT DE PRIMIRI URGENTE - C.P.U.

APROBAT=

29,0

110	MEDIC ȘEF	MEDICINA DE URGENTA	S	1,0
111	MEDIC REZIDENT AN I	MEDICINA DE URGENTA	S	1,0
112	MEDIC REZIDENT AN II	MEDICINA DE URGENTA	S	1,0
113	MEDIC SPECIALIST/PRIMAR/MEDIC	MEDICINA DE URGENTĂ/ MEDICINA GENERALA CU COMPETENTA ÎN MEDICINA DE URGENTA	S	1,0
114	MEDIC SPECIALIST/PRIMAR	MEDICINA DE URGENTĂ/ MEDICINA GENERALA CU COMPETENTA ÎN MEDICINA DE URGENTA	S	1,0
115	MEDIC SPECIALIST/PRIMAR	MEDICINA DE FAMILIE	S	1,0
116	MEDIC REZIDENT AN V	MEDICINA DE URGENTĂ/ MEDICINA GENERALA CU COMPETENTA ÎN MEDICINA DE URGENTA	S	1,0
117	ASISTENT ȘEF	MEDICALA	PL/S	1,0

118	ASISTENT/ASIST.PRINCIPAL	MEDICALA	PL	1,0
119	ASISTENT/ASIST.PRINCIPAL	MEDICALA	PL	1,0
120	ASISTENT/ASIST.PRINCIPAL	MEDICALA	PL	1,0
121	ASISTENT/ASIST.PRINCIPAL	MEDICALA	PL	1,0
122	ASISTENT/ASIST.PRINCIPAL	MEDICALA	PL	1,0
123	ASISTENT/ASIST.PRINCIPAL	MEDICALA	PL	1,0
124	ASISTENT/ASIST.PRINCIPAL	MEDICALA	PL	1,0
125	ASISTENT/ASIST.PRINCIPAL	MEDICALA	S	1,0
126	ASISTENT/ASIST.PRINCIPAL	MEDICALA	PL	1,0
127	ASISTENT/ASIST.PRINCIPAL	MEDICALA	PL	1,0
128	INFIRMIER	ALTA SPECIALITATE	M	1,0
129	INFIRMIER	ALTA SPECIALITATE	M	1,0
130	INFIRMIER	ALTA SPECIALITATE	M	1,0
131	INFIRMIER	ALTA SPECIALITATE	M	1,0
132	INFIRMIER	ALTA SPECIALITATE	M	1,0
133	INGRIJITOR	ALTA SPECIALITATE	M	1,0
134	INGRIJITOR	ALTA SPECIALITATE	M	1,0
135	BRANCARDIER	ALTA SPECIALITATE	M	1,0
136	GARDEROBIER	ALTA SPECIALITATE	M	1,0
137	REGISTRATOR MED,CLS 47-GR5-	ALTA SPECIALITATE	M	1,0
138	REGISTRATOR MED,CLS 47-GR5-	ALTA SPECIALITATE	M	1,0

BIROU INTERNĂRI-EXTERNĂRI

APROBAT=

2,0

139	ASISTENT/ASIST.PRINCIPAL	MEDICALA	PL	1,0
140	INFIRMIER	ALTA SPECIALITATE	M	1,0

SECTIE CHIRURGIE

APROBAT=

32,0

141	MEDIC SEF SECTIE	CHIRURGIE GEN.	S	1,0
142	MEDIC SPECIALIST/PRIMAR	CHIRURGIE GEN.	S	1,0
143	MEDIC SPECIALIST/PRIMAR	ORL	S	1,0
144	MEDIC REZIDENT AN III	O.R.L.	S	1,0
145	MEDIC SPECIALIST/PRIMAR	CHIRURGIE GEN.	S	1,0
146	MEDIC SPECIALIST/PRIMAR	CHIRURGIE GEN.	S	1,0
147	MEDIC SPECIALIST/PRIMAR	CHIRURGIE GEN.	S	1,0
148	MEDIC SPECIALIST/PRIMAR	CHIRURGIE VASCULARA	S	1,0
149	MEDIC SPECIALIST/PRIMAR	CHIRURGIE PLASTICĂ	S	1,0
150	MEDIC SPECIALIST/PRIMAR	ORTOPEDIE	S	1,0
151	MEDIC REZIDENT AN V	UROLOGIE	S	1,0
152	MEDIC SPECIALIST/PRIMAR	OBSTETRICA-GINECOLOGIE	S	1,0
153	MEDIC SPECIALIST/PRIMAR	OFTALMOLOGIE	S	1,0
154	ASISTENT SEF	MEDICALA	PL	1,0
155	ASISTENT/ASIST.PRINCIPAL	MEDICALA	PL	1,0
156	ASISTENT/ASIST.PRINCIPAL	MEDICALA	PL	1,0
157	ASISTENT/ASIST.PRINCIPAL	MEDICALA	PL	1,0
158	ASISTENT/ASIST.PRINCIPAL	MEDICALA	PL	1,0
159	ASISTENT/ASIST.PRINCIPAL	MEDICALA	PL	1,0
160	ASISTENT/ASIST.PRINCIPAL	MEDICALA	PL	1,0
161	ASISTENT/ASIST.PRINCIPAL	MEDICALA	PL	1,0
162	ASISTENT/ASIST.PRINCIPAL	MEDICALA	PL	1,0
163	ASISTENT/ASIST.PRINCIPAL	MEDICALA	PL	1,0
164	ASISTENT/ASIST.PRINCIPAL	MEDICALA	PL	1,0
165	ASISTENT/ASIST.PRINCIPAL	MEDICALA	PL	1,0
166	INFIRMIERA	ALTA SPECIALITATE	M	1,0
167	INFIRMIERA	ALTA SPECIALITATE	M	1,0
168	INFIRMIERA	ALTA SPECIALITATE	M	1,0
169	INFIRMIERA	ALTA SPECIALITATE	M	1,0
170	INFIRMIERA	ALTA SPECIALITATE	M	1,0
171	INGRIJITOR	ALTA SPECIALITATE	G	1,0
172	INGRIJITOR	ALTA SPECIALITATE	G	1,0

SECTIE NEUROLOGIE

APROBAT=

39,0

173	MEDIC SEF SECTIE	NEUROLOGIE	S	1,0
174	MEDIC SPECIALIST/PRIMAR	NEUROLOGIE	S	1,0
175	MEDIC SPECIALIST/PRIMAR	NEUROLOGIE	S	1,0
176	MEDIC REZIDENT AN III	NEUROLOGIE	S	1,0
177	MEDIC SPECIALIST/PRIMAR	B.F.T.	S	1,0
178	KINETOTERAPEUT	B.F.T.	S	1,0
179	PSIHOLOG	PSIHOLOGIE	S	1,0
180	ASISTENT SEF	MEDICALA	PL/S	1,0
181	ASISTENT/ASIST.PRINCIPAL	MEDICALA	PL	1,0
182	ASISTENT/ASIST.PRINCIPAL	MEDICALA	PL	1,0
183	ASISTENT/ASIST.PRINCIPAL	MEDICALA	PL	1,0
184	ASISTENT/ASIST.PRINCIPAL	MEDICALA	PL	1,0
185	ASISTENT/ASIST.PRINCIPAL	MEDICALA	PL	1,0
186	ASISTENT/ASIST.PRINCIPAL	MEDICALA	PL	1,0
187	ASISTENT/ASIST.PRINCIPAL	MEDICALA	PL	1,0
188	ASISTENT/ASIST.PRINCIPAL	MEDICALA	PL	1,0

189	ASISTENT/ASIST.PRINCIPAL	MEDICALA	PL	1,0
190	ASISTENT/ASIST.PRINCIPAL	MEDICALA	PL	1,0
191	ASISTENT/ASIST.PRINCIPAL	MEDICALA	PL	1,0
192	ASISTENT/ASIST.PRINCIPAL	MEDICALA	PL	1,0
193	ASISTENT/ASIST.PRINCIPAL	MEDICALA	PL	1,0
194	ASISTENT/ASIST.PRINCIPAL	MEDICALA	PL	1,0
195	INFIRMIERA	ALTA SPECIALITATE	M	1,0
196	INFIRMIERA	ALTA SPECIALITATE	M	1,0
197	INFIRMIERA	ALTA SPECIALITATE	M	1,0
198	INFIRMIERA	ALTA SPECIALITATE	M	1,0
199	INFIRMIERA	ALTA SPECIALITATE	M	1,0
200	INFIRMIERA	ALTA SPECIALITATE	M	1,0
201	INFIRMIERA	ALTA SPECIALITATE	M	1,0
202	INFIRMIERA	ALTA SPECIALITATE	M	1,0
203	INFIRMIERA	ALTA SPECIALITATE	M	1,0
204	INFIRMIERA	ALTA SPECIALITATE	M	1,0
205	INFIRMIERA	ALTA SPECIALITATE	M	1,0
206	INFIRMIERA	ALTA SPECIALITATE	M	1,0
207	INFIRMIERA	ALTA SPECIALITATE	M	1,0
208	INFIRMIERA	ALTA SPECIALITATE	M	1,0
209	INFIRMIER DEBUTANT / INFIRMIER	ALTA SPECIALITATE	M	1,0
210	INGRIJITOR	ALTA SPECIALITATE	G	1,0
211	INGRIJITOR	ALTA SPECIALITATE	G	1,0

COMPARTIMENT PEDIATRIE

APROBAT=

18,0

212	MEDIC SPECIALIST/PRIMAR	PEDIATRIE	S	1,0
213	MEDIC SPECIALIST/PRIMAR	PEDIATRIE	S	1,0
214	MEDIC SPECIALIST/PRIMAR	PEDIATRIE	S	1,0
215	MEDIC REZIDENT AN III	PEDIATRIE	S	1,0
216	MEDIC REZIDENT AN IV	PEDIATRIE	S	1,0
217	ASISTENT/ASIST.PRINCIPAL	PEDIATRIE	PL	1,0
218	ASISTENT/ASIST.PRINCIPAL	PEDIATRIE	PL	1,0
219	ASISTENT/ASIST.PRINCIPAL	PEDIATRIE	PL	1,0
220	ASISTENT/ASIST.PRINCIPAL	PEDIATRIE	PL	1,0
221	ASISTENT/ASIST.PRINCIPAL	PEDIATRIE	S	1,0
222	ASISTENT/ASIST.PRINCIPAL	PEDIATRIE	PL	1,0
223	ASISTENT/ASIST.PRINCIPAL	PEDIATRIE	S	1,0
224	INFIRMIERA	ALTA SPECIALITATE	M	1,0
225	INFIRMIERA	ALTA SPECIALITATE	M	1,0
226	INFIRMIERA	ALTA SPECIALITATE	M	1,0
227	INFIRMIERA	ALTA SPECIALITATE	M	1,0
228	INGRIJITOARE	ALTA SPECIALITATE	M	1,0
229	INGRIJITOARE	ALTA SPECIALITATE	G	1,0

COMPARTIMENT CIAAM

APROBAT=

5,0

230	MEDIC SPECIALIST/PRIMAR	EPIDEMIOLOGIE	S	1,0
231	MEDIC REZIDENT AN III	EPIDEMIOLOGIE	S	1,0
232	INFIRMIER D.D.D.	IGIENA	G	1,0
233	ASISTENT/ASIST.PRINCIPAL	IGIENA	PL	1,0
234	MEDIC SPECIALIST/PRIMAR	BOLI INFECTIOASE	S	1,0
235	ASISTENT PRINCIPAL	IGIENA	PL	1,0

COMPARTIMENT A.T.I./UTS

APROBAT=

22,0

236	MEDIC ȘEF SECTIE	A.T.I.	S	1,0
237	MEDIC REZIDENT AN V	A.T.I.	S	1,0
238	MEDIC SPECIALIST/PRIMAR	A.T.I.	S	1,0
239	MEDIC SPECIALIST/PRIMAR	A.T.I.	S	1,0
240	MEDIC SPECIALIST/PRIMAR	A.T.I.	S	1,0
241	ASIST.PRINCIPAL ȘEF	MEDICALA	PL	1,0
242	ASISTENT/ASIST.PRINCIPAL	MEDICALA	PL	1,0
243	ASISTENT/ASIST.PRINCIPAL	MEDICALA	PL	1,0
244	ASISTENT/ASIST.PRINCIPAL	MEDICALA	PL	1,0
245	ASISTENT/ASIST.PRINCIPAL	MEDICALA	PL	1,0
246	ASISTENT/ASIST.PRINCIPAL	MEDICALA	PL	1,0
247	ASISTENT/ASIST.PRINCIPAL	MEDICALA	PL	1,0
248	ASISTENT/ASIST.PRINCIPAL	MEDICALA	PL	1,0
249	ASISTENT/ASIST.PRINCIPAL	MEDICALA	PL	1,0
250	BIOINGINER MEDICAL DEB/BIOINGINER MED.	MEDICALA	PL	1,0
251	INFIRMIERA	A.T.I.	M	1,0
252	INFIRMIERA	A.T.I.	M	1,0
253	INFIRMIERA	A.T.I.	M	1,0
254	INFIRMIERA	A.T.I.	M	1,0
255	INFIRMIERA	ALTA SPECIALITATE	M	1,0
256	INGRIJITOR	ALTA SPECIALITATE	M	1,0
257	BRANCARDIER	ALTA SPECIALITATE	G	1,0

FARMACIE**APROBAT=****6,0**

258	FARMACIST ȘEF	FARMACIE	S	1,0
259	FARMACIST	FARMACIE	S	1,0
260	ASISTENT PRINCIPAL FARMACIE	FARMACIE	PL	1,0
261	ASISTENT PRINCIPAL FARMACIE	FARMACIE	PL	1,0
262	ASISTENT PRINCIPAL FARMACIE	FARMACIE	PL	1,0
263	INGRIJITOR	ALTA SPECIALITATE	G	1,0

LABORATOR ANALIZE MEDICALE**APROBAT=****11,0**

264	MEDIC PRIMAR/SPECIALIST	LABORATOR	S	1,0
265	MEDIC SPECIALIST/PRIMAR	LABORATOR	S	1,0
266	MEDIC REZIDENT AN III	LABORATOR	S	1,0
267	MEDIC SPECIALIST/PRIMAR	LABORATOR	S	1,0
268	CHIMIST PRINCIPAL	CHIMIE	S	1,0
269	CHIMIST /CHIMIST SPECIALIST	CHIMIE	S	1,0
270	ASISTENT/ASIST.PRINCIPAL	LABORATOR	PL	1,0
271	ASISTENT/ASIST.PRINCIPAL	LABORATOR	S	1,0
272	BIOLOG SPECIALIST	BIOLOGIE	S	1,0
273	BIOLOG SPECIALIST	BIOLOGIE	S	1,0
274	INGRIJITOR	ALTA SPECIALITATE	G	1,0

LABORATOR MICROBIOLOGIE MEDICALĂ**APROBAT=****5,0**

275	MEDIC PRIMAR/SPECIALIST	LABORATOR	S	1,0
276	MEDIC REZIDENT AN IV	LABORATOR	S	1,0
277	BIOLOG	BIOLOGIE	S	1,0
278	ASISTENT/ASIST.PRINCIPAL	LABORATOR	PL	1,0
279	INGRIJITOR	ALTA SPECIALITATE	G	1,0

LABORATOR RADIOLOGIE ȘI IMAGISTICĂ MEDICALĂ**APROBAT=****20,0**

280	MEDIC PRIMAR/SPECIALIST	RADIOLOGIE	S	1,0
281	MEDIC PRIMAR/SPECIALIST	RADIOLOGIE	S	1,0
282	MEDIC SPECIALIST/PRIMAR	RADIOLOGIE	S	1,0
283	MEDIC PRIMAR/SPECIALIST	RADIOLOGIE	S	1,0
284	MEDIC REZIDENT AN I	RADIOLOGIE	S	1,0
285	MEDIC REZIDENT AN IV	RADIOLOGIE	S	1,0
286	MEDIC PRIMAR/SPECIALIST	RADIOLOGIE	S	1,0
287	FIZICIAN PRINCIPAL	RADIOLOGIE	S	1,0
288	ASISTENT/ASIST.PRINCIPAL	MEDICALA	PL	1,0
289	ASISTENT/ASIST.PRINCIPAL	MEDICALA	PL	1,0
290	ASISTENT/ASIST.PRINCIPAL	MEDICALA	PL	1,0
291	ASISTENT/ASIST.PRINCIPAL	MEDICALA	PL	1,0
292	ASISTENT/ASIST.PRINCIPAL	RADIOLOGIE	PL	1,0
293	ASISTENT/ASIST.PRINCIPAL	MEDICALA	PL	1,0
294	BIOINGINER DEB/ MED/INGINER MED DEB/ MEDICAL	BIOINGINER MED/INGINER MEDICAL	S	1,0
295	BIOINGINER DEB/ MED/INGINER MED DEB/ MEDICAL	BIOINGINER MED/INGINER MEDICAL	S	1,0
296	BIOINGINER DEB/ MED/INGINER MED DEB/ MEDICAL	BIOINGINER MED/INGINER MEDICAL	S	1,0
297	BIOINGINER DEB/ MED/INGINER MED DEB/ MEDICAL	BIOINGINER MED/INGINER MEDICAL	S	1,0
298	BIOINGINER DEB/ MED/INGINER MED DEB/ MEDICAL	BIOINGINER MED/INGINER MEDICAL	S	1,0
299	INGRIJITOR	ALTA SPECIALITATE	M	1,0

LABORATOR BFT (BAZĂ TRATAMENT)**APROBAT=****6,0**

300	KINETOTERAPEUT PRINCIPAL	KINETOTERAPEUT	S	1,0
301	ASISTENT/ASIST.PRINCIPAL	BFT	PL	1,0
302	ASISTENT/ASIST.PRINCIPAL	BFT	PL	1,0
303	ASISTENT/ASIST.PRINCIPAL	BFT	PL	1,0
304	ASISTENT/ASIST.PRINCIPAL	BFT	PL	1,0
305	MASEUR DEBUTANT	BFT	PL	1,0
306	INGRIJITOR	ALTA SPECIALITATE	G	1,0

SECTIA MEDICINĂ INTERNĂ**APROBAT=****53,0**

307	MEDIC PRIMAR - ȘEF SECTIE	MEDICINA INTERNA	S	1,0
308	MEDIC SPECIALIST/PRIMAR	MEDICINA INTERNA	S	1,0
309	MEDIC SPECIALIST/PRIMAR	MEDICINA INTERNA	S	1,0
310	MEDIC SPECIALIST/PRIMAR	MEDICINA INTERNA	S	1,0
311	MEDIC SPECIALIST/PRIMAR	MEDICINA INTERNA	S	1,0
312	MEDIC PRIMAR/SPECIALIST	MEDICINA INTERNA	S	1,0
313	MEDIC PRIMAR/SPECIALIST	REUMATOLOGIE	S	1,0
314	MEDIC REZIDENT AN II	MEDICINA INTERNA	S	1,0
315	MEDIC REZIDENT AN V	MEDICINA INTERNA	S	1,0
316	MEDIC SPECIALIST/PRIMAR	GASTROENTEROLOGIE	S	1,0
317	MEDIC SPECIALIST/PRIMAR	GASTROENTEROLOGIE	S	1,0

318	MEDIC PRIMAR/SPECIALIST	CARDIOLOGIE	S	1,0
319	MEDIC REZIDENT AN IV	CARDIOLOGIE	S	1,0
320	MEDIC REZIDENT AN VI	CARDIOLOGIE	S	1,0
321	MEDIC PRIMAR/SPECIALIST	B.F.T.	S	1,0
322	ASISTENT SEF	MEDICALA	PL	1,0
323	ASISTENT/ASIST.PRINCIPAL	MEDICALA	PL	1,0
324	ASISTENT/ASIST.PRINCIPAL	MEDICALA	PL	1,0
325	ASISTENT/ASIST.PRINCIPAL	MEDICALA	PL	1,0
326	ASISTENT/ASIST.PRINCIPAL	MEDICALA	PL	1,0
327	ASISTENT/ASIST.PRINCIPAL	MEDICALA	PL	1,0
328	ASISTENT/ASIST.PRINCIPAL	MEDICALA	PL	1,0
329	ASISTENT/ASIST.PRINCIPAL	MEDICALA	PL	1,0
330	ASISTENT/ASIST.PRINCIPAL	MEDICALA	PL	1,0
331	ASISTENT/ASIST.PRINCIPAL	MEDICALA	PL	1,0
332	ASISTENT/ASIST.PRINCIPAL	MEDICALA	PL	1,0
333	ASISTENT/ASIST.PRINCIPAL	MEDICALA	PL	1,0
334	ASISTENT/ASIST.PRINCIPAL	MEDICALA	PL	1,0
335	ASISTENT/ASIST.PRINCIPAL	MEDICALA	PL	1,0
336	ASISTENT/ASIST.PRINCIPAL	MEDICALA	PL	1,0
337	ASISTENT/ASIST.PRINCIPAL	MEDICALA	PL	1,0
338	ASISTENT/ASIST.PRINCIPAL	MEDICALA	PL	1,0
339	ASISTENT/ASIST.PRINCIPAL	MEDICALA	PL	1,0
340	ASISTENT/ASIST.PRINCIPAL	MEDICALA	PL	1,0
341	ASISTENT/ASIST.PRINCIPAL	MEDICALA	PL	1,0
342	INFIRMIER	ALTA SPECIALITATE	M	1,0
343	INFIRMIER	ALTA SPECIALITATE	M	1,0
344	INFIRMIER	ALTA SPECIALITATE	M	1,0
345	INFIRMIER	ALTA SPECIALITATE	M	1,0
346	INFIRMIER	ALTA SPECIALITATE	M	1,0
347	INFIRMIER	ALTA SPECIALITATE	M	1,0
348	INFIRMIER	ALTA SPECIALITATE	M	1,0
349	INFIRMIER	ALTA SPECIALITATE	M	1,0
350	INFIRMIER	ALTA SPECIALITATE	M	1,0
351	INFIRMIER	ALTA SPECIALITATE	M	1,0
352	INFIRMIER	ALTA SPECIALITATE	M	1,0
353	INGRIJITOR	ALTA SPECIALITATE	G	1,0
354	INGRIJITOR	ALTA SPECIALITATE	G	1,0
355	INGRIJITOR	ALTA SPECIALITATE	G	1,0
356	INGRIJITOR	ALTA SPECIALITATE	G	1,0
357	INGRIJITOR	ALTA SPECIALITATE	G	1,0
358	INGRIJITOR	ALTA SPECIALITATE	G	1,0
359	REGISTRATOR MEDICAL	ALTA SPECIALITATE	M	1,0

SERVICIUL ANATOMIE PATOLOGICĂ

APROBAT=

4,0

360	MEDIC SPECIALIST/PRIMAR	ANAT. PATOLOGICA	S	1,0
361	ASISTENT/ASIST.PRINCIPAL	MEDICALA	S	1,0
362	INGRIJITOR	ALTA SPECIALITATE	G	1,0
363	AUTOPSIER	ALTA SPECIALITATE	G	1,0

COMPARTIMENT SPĂLĂTORIE

APROBAT=

2,0

364	SPALATOREASA	SPALATOREASA	M	1,0
365	SPALATOREASA	SPALATOREASA	M	1,0

COMPARTIMENT SPITALIZARE DE ZI

APROBAT=

9,0

366	MEDIC PRIMAR/SPECIALIST	MEDICALA	S	1,0
367	ASISTENT/ASIST.PRINCIPAL	MEDICALA	PL	1,0
368	ASISTENT/ASIST.PRINCIPAL	MEDICALA	PL	1,0
369	ASISTENT/ASIST.PRINCIPAL	MEDICALA	PL	1,0
370	ASISTENT/ASIST.PRINCIPAL	MEDICALA	PL	1,0
371	ASISTENT/ASIST.PRINCIPAL	MEDICALA	PL	1,0
372	ASISTENT/ASIST.PRINCIPAL	MEDICALA	PL	1,0
373	INFIRMIER	ALTA SPECIALITATE	M	1,0
374	INGRIJITOR	ALTA SPECIALITATE	G	1,0

COMPARTIMENT STERILIZARE

APROBAT=

2,0

375	ASISTENT/ASIST.PRINCIPAL	IGIENA	PL	1,0
376	ASISTENT/ASIST.PRINCIPAL	IGIENA	PL	1,0

COMITET DIRECTOR

APROBAT=

3,0

377	MANAGER	ALTA SPECIALITATE	S	1,0
378	DIRECTOR MEDICAL	MEDICALA	S	1,0
379	DIRECTOR FINANCIAR-CONTABIL	ALTA SPECIALITATE	S	1,0

COMPARTIMENT AUDIT

APROBAT=		1,0	
380	AUDITOR I	ECONOMIST	S 1,0

COMPARTIMENT FINANCIAR-CONTABILITATE

APROBAT=		3,0	
381	ECONOMIST IA	ECONOMIST	S 1,0
382	ECONOMIST IA	ECONOMIST	S 1,0
383	ECONOMIST I	ECONOMIST	S 1,0

COMPARTIMENT TEHNIC/PSI+SSM

APROBAT=		2,0	
384	INGINER/ CADRU TEHNIC	INGINER	S 1,0
385	INGINER DEBUTANT/INGINER SSM/PSI	INGINER	S 1,0

COMPARTIMENT ACHIZITIIL PUBLICE

APROBAT=		1,0	
386	ECONOMIST I A / ECONOMIST I	ECONOMIST	S 1,0

COMPARTIMENT APROVIZIONARE-TRANSPORT

APROBAT=		2,0	
387	MAGAZINER I	ALTA SPECIALITATE	M 1,0
388	MAGAZINER I	ALTA SPECIALITATE	M 1,0

COMPARTIMENT GDPR

APROBAT=		1,0	
389	RESPONSABIL GDPR	JURIDIC/ECONOMIST/INGINER	S 1,0

COMPARTIMENT INFORMATICA

APROBAT=		1,0	
390	INFORMATICIAN	INFORMATICA	S 1,0

COMPARTIMENT R.U.N.O.S.

APROBAT=		3,0	
391	ECONOMIST IA	ALTA SPECIALITATE	S 1,0
392	ECONOMIST IA	ALTA SPECIALITATE	S 1,0
393	ECONOMIST IA	ALTA SPECIALITATE	S 1,0

COMPARTIMENT INTRETINERE SI REPARATII

APROBAT=		16,0	
394	MUNCITOR I	ELECTRICIAN	M 1,0
395	MUNCITOR I	ELECTRICIAN	M 1,0
396	MUNCITOR II	ELECTRICIAN	M 1,0
397	MUNCITOR IV	INSTALATOR SANITAR	M 1,0
398	MUNCITOR IV	INSTALATOR SANITAR	M 1,0
399	MUNCITOR II	ZIDAR	M 1,0
400	MUNCITOR III	LENJER	M 1,0
401	MUNCITOR I	FOCHIST	M 1,0
402	MUNCITOR I	FOCHIST	M 1,0
403	MUNCITOR I	FOCHIST	M 1,0
404	MUNCITOR I	FOCHIST	M 1,0
405	MUNCITOR IV	FOCHIST	M 1,0
406	MUNCITOR I	LACATUS MECANIC	M 1,0
407	INGRIJITOR	MUNC.NEC.SPATII VERZI	G 1,0
408	SOFER II	SOFER II	M 1,0
409	MUNCITOR II	ZIDAR	M 1,0

COMPARTIMENT JURIDIC

APROBAT=		1,0	
410	CONSILIER JURIDIC	CONSILIER JURIDIC	S 1,0

TOTAL POSTURI: 410
de conducere: 15
execuție: 395

PREȘEDINTE DE ȘEDINȚĂ
CONSILIER LOCAL
COZMA FLORIN IONUȚ



CONTRASEMNEAZĂ
SECRETAR GENERAL
JR. DANIELA CHIRILĂ

