

JUDEȚUL BACĂU  
CONSILIUL LOCAL AL ORAȘULUI  
COMĂNEȘTI

## HOTĂRÂRE

privind aprobarea modificării Statului de funcții și a Organigramei la Spitalul orașenesc „IOAN LASCĂR” Comănești pentru anul 2024

Consiliul Local al orașului Comănești, județul Bacău, întrunit în ședința ordinară din data de 20.03.2024;

*Având în vedere:*

Adresa nr. 29138/B/18.03.2024 a Spitalului orașenesc „Ioan Lascăr”, Comănești prin care se solicită aprobarea modificării Statului de funcții și a Organigramei la Spitalul Orașenesc „IOAN LASCĂR” Comănești pentru anul 2024;

- Referatul de aprobare nr. 29140/A/ 18.03.2024 al Primarului orașului Comănești;
- Raportul de specialitate nr. 29140/B/18.03.2024 al Compartimentului Resurselor Umane prin care propune aprobarea modificării Statului de funcții și a Organigramei la Spitalul Orașenesc „IOAN LASCĂR” Comănești pentru anul 2024;
- Avizele Comisiilor de specialitate din cadrul Consiliului Local;

*În conformitate cu prevederile:*

- Legea nr. 421/2023 – Legea bugetului de stat pe anul 2024;
- Legea nr. 273/2006 – privind finanțele publice locale, reactualizată;
- Legea 95/2006 – privind reforma în domeniul sănătății, cu modificările și completările ulterioare
- Ordonanța de urgență nr. 162/2008 – privind transferul ansamblului de atribuții și competențe exercitate de Ministerul Sănătății Publice către autoritățile administrației publice locale;
- Ordinul nr. 1043/2010 privind aprobarea normelor metodologice pentru elaborarea Bugetului de venituri și cheltuieli al Spitalului Public cu modificările și completările ulterioare;
- Legea cadru nr. 153/2017 – privind salarizarea personalului plătit din fonduri publice cu modificările și completările ulterioare;
- Ordin nr. 1224/2010 - privind aprobarea normativelor de personal pentru asistența medicală spitalicească, precum și pentru modificarea și completarea Ordinului ministrului sănătății publice nr. 1.778/2006 privind aprobarea normativelor de personal, cu modificările și completările ulterioare;

**În temeiul art. 129 alin. 4 lit. a), art 139 alin 3 lit a), art 196, alin 1, lit a) și art 197 alin. 1 din Ordonanța de urgență nr. 57/2019 privind Codul Administrativ, adoptă următoarea:**

## HOTĂRÂRE

**Art.1** Consiliul Local al orașului Comănești aprobă modificarea Statului de funcții și a Organigramei, la Spitalul Orașenesc „IOAN LASCĂR” Comănești pentru anul 2024, conform anexelor 1 și 2, care fac parte integrantă din prezenta.

**Art.2** Prezenta hotărâre se comunică Instituției Prefectului Județului Bacău, Primarului orașului Comănești, Spitalului orașenesc „Ioan Lascăr” Comănești, Direcției Economice din cadrul UAT Comănești, pentru ducere la îndeplinire, cu drept de contestație în termen de 30 de zile la Tribunalul Bacău.

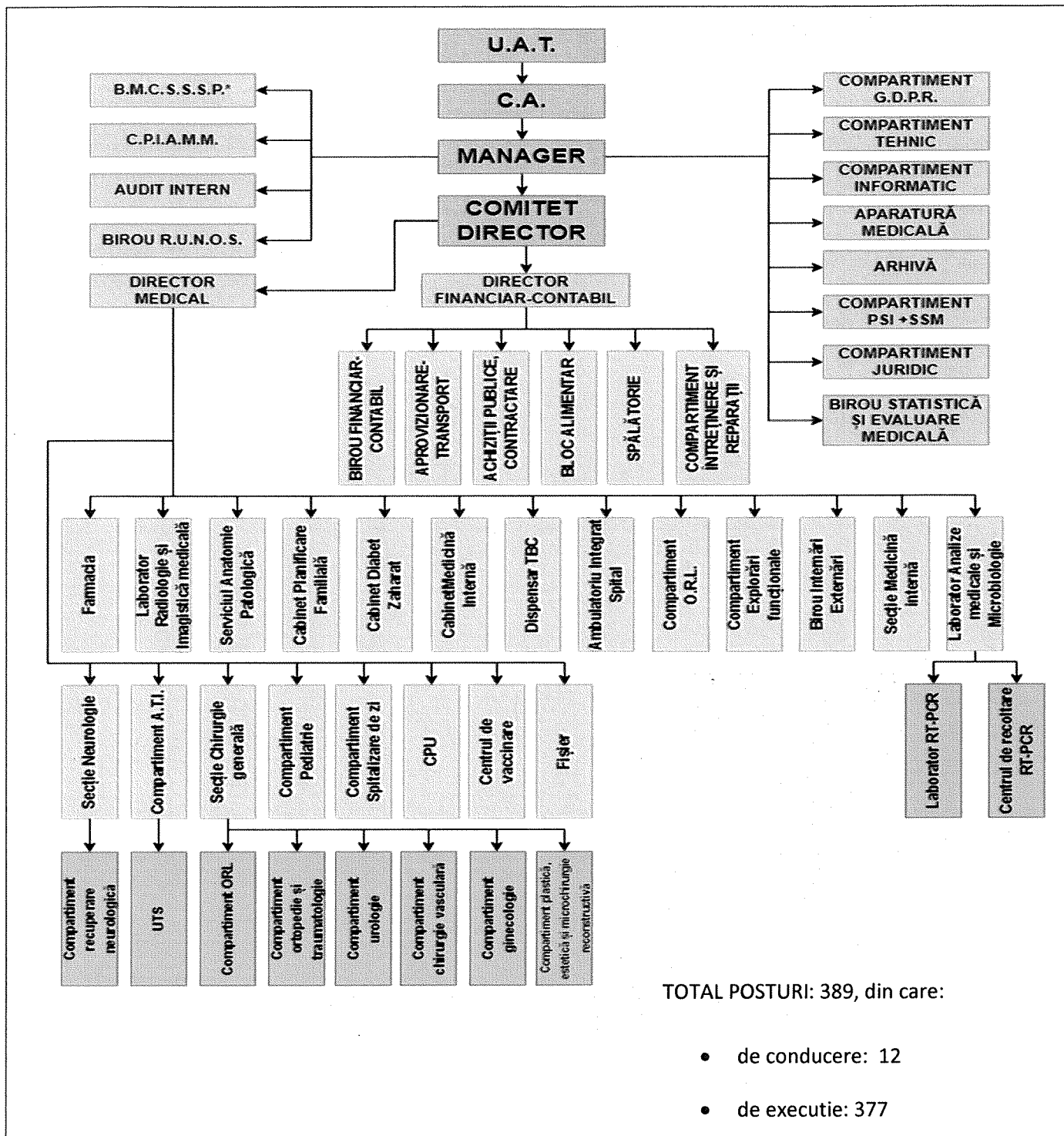
**Președinte de ședință,  
Consilier local,  
Banu Mihai Răzvan**



**Contrasemnează,  
Secretar general  
jurist Daniela Chirilă**

Nr. 42  
Din 28.03.2024

**ORGANIGRAMA 2024**



PRESEDINTE DE  
SEDINTA,

Consilier Local,

BANU MIHAI RAZVAN

CONTRASEMNEAZA,

Secretar,

Jr. Chirila Daniela

MANAGER,

Olaru Constantin



**SPITALUL ORASENESC "IOAN LASCAR" COMANESTI**

STR. V. ALECSANDRI NR. 1 JUD. BACAU

TEL/FAX: 0234374215 / 0234374219

CATEGORIA UNITATII a-IV-a

Numar de paturi = 120

Anexa la HCL nr. <sup>42</sup>.....

**STAT FUNCTII ANUL 2024**

Nr. crt	Funcția, gradul și treapta profesională	Structura	Specialitatea	Nivel studii	Cuquantum post normal	Nr posturi aprobate	Nr posturi ocupate	Nr posturi vacante
<b>COMPARTIMENT ADMINISTRATIV</b>								
<b>APROBAT=</b>		<b>3,00</b>	<b>OCUPAT=</b>	<b>3,0</b>	<b>VACANT=</b>	<b>0,0</b>		
1	REFERENT	ADMINISTRATIV	FISIER	M	1,0	1,0	1,0	0,0
2	SECRETAR-DACTIL. IA	ADMINISTRATIV	SECRETAR-DACTIL. IA	M	1,0	1,0	1,0	0,0
3	ARHIVAR	ADMINISTRATIV	ARHIVAR I CLS22-GR5-	M	1,0	1,0	1,0	0,0
<b>COMPARTIMENT APARATURĂ MEDICALĂ</b>								
<b>APROBAT=</b>		<b>1,00</b>	<b>OCUPAT=</b>	<b>0,0</b>	<b>VACANT=</b>	<b>1,0</b>		
4	BIOINGINER MEDICAL DEBUTANT	APARATURA MEDICALA	BIOINGINER MEDICAL	S	1,0	1,0	0,0	1,0
<b>B.M.C.S.S.S.P.</b>								
<b>APROBAT=</b>		<b>4,00</b>	<b>OCUPAT=</b>	<b>3,0</b>	<b>VACANT=</b>	<b>1,0</b>		
5	MEDIC SPECIALIST/PRIMAR	B.M.C.S.S.S.P.	ALTA SPECIALITATE	S	1,0	1,0	1,0	0,0
6	MANAGER DE CALITATE	B.M.C.S.S.S.P.	ALTA SPECIALITATE	S	1,0	1,0	0,0	1,0
7	CONSILIER	B.M.C.S.S.S.P.	ALTA SPECIALITATE	S	1,0	1,0	1,0	0,0
8	REF./REF. SPEC./CONSILIER	B.M.C.S.S.S.P.	ALTA SPECIALITATE	S	1,0	1,0	1,0	0,0
<b>BIROU STATISTICA SI EVALUARE</b>								
<b>APROBAT=</b>		<b>3,00</b>	<b>OCUPAT=</b>	<b>2,0</b>	<b>VACANT=</b>	<b>1,0</b>		
9	REFERENT DE SPECIALITATE	BIROU STATISTICA SI EVALUARE	ALTA SPECIALITATE	S	1,0	1,0	1,0	0,0
10	REFERENT DE SPECIALITATE	BIROU STATISTICA SI EVALUARE	ALTA SPECIALITATE	S	1,0	1,0	0,0	1,0
11	REFERENT DE SPECIALITATE	BIROU STATISTICA SI EVALUARE	ALTA SPECIALITATE	S	1,0	1,0	1,0	0,0
<b>BLOC ALIMENTAR</b>								
<b>APROBAT=</b>		<b>5,00</b>	<b>OCUPAT=</b>	<b>4,0</b>	<b>VACANT=</b>	<b>1,0</b>		
12	MUNCITOR I	BLOC ALIMENTAR	BUCATAR	M	1,0	1,0	1,0	0,0
13	MUNCITOR I	BLOC ALIMENTAR	BUCATAR	M	1,0	1,0	1,0	0,0
14	MUNCITOR I	BLOC ALIMENTAR	BUCATAR	M	1,0	1,0	1,0	0,0
15	ASISTENT PRINCIPAL	BLOC ALIMENTAR	BUCATARIE DIETETICA	PL	1,0	1,0	0,0	1,0
16	INGRIJITOR	BLOC ALIMENTAR	ALTA SPECIALITATE	G	1,0	1,0	1,0	0,0
<b>BLOC OPERATOR</b>								
<b>APROBAT=</b>		<b>6,00</b>	<b>OCUPAT=</b>	<b>3,0</b>	<b>VACANT=</b>	<b>3,0</b>		
17	ASISTENT/AS. PRINCIPAL	BLOC OPERATOR	MEDICALA	PL	1,0	1,0	0,0	1,0
18	ASISTENT/AS. PRINCIPAL	BLOC OPERATOR	MEDICALA	PL	1,0	1,0	1,0	0,0
19	ASISTENT/AS. PRINCIPAL	BLOC OPERATOR	MEDICALA	PL	1,0	1,0	1,0	0,0
20	BRANCARDIER	BLOC OPERATOR	ALTA SPECIALITATE	G	1,0	1,0	0,0	1,0
21	INFIRMIER	BLOC OPERATOR	ALTA SPECIALITATE	M	1,0	1,0	1,0	0,0

22	INGRIJITOR		BLOC OPERATOR	ALTA SPECIALITATE	G	1,0	1,0	0,0	1,0
----	------------	--	---------------	-------------------	---	-----	-----	-----	-----

#### **CABINET CARDIOLOGIE**

<b>APROBAT=</b>		<b>5,00 OCUPAT=</b>		<b>3,0 VACANT=</b>		<b>2,0</b>			
23	MEDIC SPECIALIST/PRIMAR		CAB. CARDIOLOGIE	CARDIOLOGIE	S	1,0	1,0	1,0	0,0
24	MEDIC SPECIALIST/PRIMAR		CAB. CARDIOLOGIE	CARDIOLOGIE	S	1,0	1,0	1,0	0,0
25	MEDIC REZIDENT AN I		CAB. CARDIOLOGIE	CARDIOLOGIE	S	1,0	1,0	1,0	0,0
26	ASISTENT/AS. PRINCIPAL		CAB. CARDIOLOGIE	MEDICALA	PL	1,0	1,0	0,0	1,0
27	ASISTENT/AS. PRINCIPAL		CAB. CARDIOLOGIE	MEDICALA	PL	1,0	1,0	0,0	1,0

#### **CABINET CHIRURGIE GENERALA**

<b>APROBAT=</b>		<b>5,00 OCUPAT=</b>		<b>3,0 VACANT=</b>		<b>2,0</b>			
28	MEDIC SPECIALIST/PRIMAR		CAB. CHIRURGIE GENERALA	CHIRURGIE GENERALA	S	1,0	1,0	1,0	0,0
29	MEDIC SPECIALIST/PRIMAR		CAB. CHIRURGIE GENERALA	CHIRURGIE GENERALA	S	1,0	1,0	0,0	1,0
30	ASISTENT PR. CLS 50-GR3-		CAB. CHIRURGIE GENERALA	CHIRURGIE GENERALA	PL	1,0	1,0	0,0	1,0
31	ASISTENT/AS. PRINCIPAL		CAB. CHIRURGIE GENERALA	MEDICALA	PL	1,0	1,0	1,0	0,0
32	INGRIJITOR CLS 21-GR5-		CAB. CHIRURGIE GENERALA	ALTA SPECIALITATE	G	1,0	1,0	1,0	0,0

#### **CABINET DERMATOLOGIE**

<b>APROBAT=</b>		<b>6,00 OCUPAT=</b>		<b>2,0 VACANT=</b>		<b>4,0</b>			
33	MEDIC SPECIALIST/PRIMAR		CAB. DERMATOLOGIE	DERMATOLOGIE	S	1,0	1,0	0,0	1,0
34	MEDIC REZIDENT AN I		CAB. DERMATOLOGIE	DERMATOLOGIE	S	1,0	1,0	1,0	0,0
35	MEDIC REZIDENT AN II		CAB. DERMATOLOGIE	DERMATOLOGIE	S	1,0	1,0	1,0	0,0
36	MEDIC SPECIALIST/PRIMAR		CAB. DERMATOLOGIE	DERMATOLOGIE	S	1,0	1,0	0,0	1,0
37	ASISTENT/AS. PRINCIPAL		CAB. DERMATOLOGIE	MEDICALA	PL	1,0	1,0	0,0	1,0
38	ASISTENT/AS. PRINCIPAL		CAB. DERMATOLOGIE	MEDICALA	PL	1,0	1,0	0,0	1,0

#### **CABINET DIABET ZAHARAT, BOLI NUTRIȚIE ȘI METABOLISM**

<b>APROBAT=</b>		<b>6,00 OCUPAT=</b>		<b>5,0 VACANT=</b>		<b>1,0</b>			
39	MEDIC REZIDENT AN III		CAB. DIABET ZAHARAT	DIABET ZAHARAT	S	1,0	1,0	1,0	0,0
40	MEDIC SPECIALIST/PRIMAR		CAB. DIABET ZAHARAT	DIABET ZAHARAT	S	1,0	1,0	1,0	0,0
41	MEDIC SPECIALIST/PRIMAR		CAB. DIABET ZAHARAT	DIABET ZAHARAT	S	1,0	1,0	0,0	1,0
42	ASISTENT/AS. PRINCIPAL		CAB. DIABET ZAHARAT	MEDICALA	PL	1,0	1,0	1,0	0,0
43	ASISTENT/AS. PRINCIPAL		CAB. DIABET ZAHARAT	MEDICALA	PL	1,0	1,0	1,0	0,0
44	MEDIC REZIDENT AN IV		CAB. DIABET ZAHARAT	DIABET ZAHARAT	S	1,0	1,0	1,0	0,0

#### **CABINET ENDOCRINOLOGIE**

<b>APROBAT=</b>		<b>3,00 OCUPAT=</b>		<b>3,0 VACANT=</b>		<b>0,0</b>			
45	MEDIC SPECIALIST/PRIMAR		CAB. ENDOCRINOLOGIE	MEDICALA	S	1,0	1,0	1,0	0,0
46	MEDIC REZIDENT AN I		CAB. ENDOCRINOLOGIE	MEDICALA	S	1,0	1,0	1,0	0,0
47	ASISTENT/AS. PRINCIPAL		CAB. ENDOCRINOLOGIE	MEDICALA	PL	1,0	1,0	1,0	0,0

#### **CABINET EXPLORARI FUNCTIONALE**

<b>APROBAT=</b>		<b>2,00 OCUPAT=</b>		<b>1,0 VACANT=</b>		<b>1,0</b>			
48	MEDIC SPECIALIST/PRIMAR		CAB. EXPLORARI FUNCTIONALE	MEDICALA	S	1,0	1,0	0,0	1,0
49	ASISTENT/AS. PRINCIPAL		CAB. EXPLORARI FUNCTIONALE	MEDICALA	PL	1,0	1,0	1,0	0,0

#### **CABINET GASTROENTEROLOGIE**

<b>APROBAT=</b>		<b>2,00 OCUPAT=</b>		<b>2,0 VACANT=</b>		<b>0,0</b>			
50	MEDIC SPECIALIST/PRIMAR		CAB. GASTROENTEROLOGIE	GASTROENTEROLOGIE	S	1,0	1,0	1,0	0,0
51	ASISTENT/AS. PRINCIPAL		CAB. GASTROENTEROLOGIE	MEDICALA	PL	1,0	1,0	1,0	0,0

**CABINET MEDICINĂ INTERNĂ**

<b>APROBAT=</b>		<b>8,00 OCUPAT=</b>		<b>7,0 VACANT=</b>		<b>1,0</b>			
52	MEDIC SPECIALIST/PRIMAR		CAB. MEDICINA INTERNA	CAB. MEDICINA INTERNA	S	1,0	1,0	1,0	0,0
53	MEDIC SPECIALIST/PRIMAR		CAB. MEDICINA INTERNA	CAB. MEDICINA INTERNA	S	1,0	1,0	1,0	0,0
54	MEDIC PRIMAR/SPECIALIST		CAB. MEDICINA INTERNA	CAB. MEDICINA INTERNA	S	1,0	1,0	1,0	0,0
55	MEDIC PRIMAR/SPECIALIST		CAB. MEDICINA INTERNA	CAB. MEDICINA INTERNA	S	1,0	1,0	1,0	0,0
56	ASISTENT/AS. PRINCIPAL		CAB. MEDICINA INTERNA	MEDICALA	PL	1,0	1,0	0,0	1,0
57	ASISTENT/AS. PRINCIPAL		CAB. MEDICINA INTERNA	MEDICALA	PL	1,0	1,0	1,0	0,0
58	ASISTENT/AS. PRINCIPAL		CAB. MEDICINA INTERNA	MEDICALA	PL	1,0	1,0	1,0	0,0
59	ASISTENT/AS. PRINCIPAL		CAB. MEDICINA INTERNA	MEDICALA	PL	1,0	1,0	1,0	0,0

**CABINET NEFROLOGIE**

<b>APROBAT=</b>		<b>3,00 OCUPAT=</b>		<b>0,0 VACANT=</b>		<b>3,0</b>			
60	MEDIC REZIDENT AN I		CAB. NEFROLOGIE	NEFROLOGIE	S	1,0	1,0	0,0	1,0
61	MEDIC SPECIALIST/PRIMAR		CAB. NEFROLOGIE	NEFROLOGIE	S	1,0	1,0	0,0	1,0
62	ASISTENT/AS. PRINCIPAL		CAB. NEFROLOGIE	NEFROLOGIE	PL	1,0	1,0	0,0	1,0

**CABINET NEUROLOGIE**

<b>APROBAT=</b>		<b>3,00 OCUPAT=</b>		<b>3,0 VACANT=</b>		<b>0,0</b>			
63	MEDIC REZIDENT AN II		CAB. NEUROLOGIE	NEUROLOGIE	S	1,0	1,0	1,0	0,0
64	MEDIC SPECIALIST/PRIMAR		CAB. NEUROLOGIE	NEUROLOGIE	S	1,0	1,0	1,0	0,0
65	ASISTENT / ASISTENT PRINCIPAL		CAB. NEUROLOGIE	MEDICALA	PL	1,0	1,0	1,0	0,0

**CABINET O.R.L.**

<b>APROBAT=</b>		<b>3,00 OCUPAT=</b>		<b>1,0 VACANT=</b>		<b>2,0</b>			
66	MEDIC PRIMAR/ SPECIALIST		CAB. O.R.L.	O.R.L.	S	1,0	1,0	0,0	1,0
67	MEDIC REZIDENT AN II		CAB. O.R.L.	O.R.L.	S	1,0	1,0	1,0	0,0
68	ASISTENT PRINCIPAL		CAB. O.R.L.	MEDICALA	PL	1,0	1,0	0,0	1,0

**CABINET OBSTETRICĂ-GINECOLOGIE**

<b>APROBAT=</b>		<b>5,00 OCUPAT=</b>		<b>3,0 VACANT=</b>		<b>2,0</b>			
69	MEDIC SPECIALIST/PRIMAR		CAB. OBSTETRICĂ GINEC	OBSTETRICĂ GINEC.	S	1,0	1,0	1,0	0,0
70	MEDIC REZIDENT AN I		CAB. OBSTETRICĂ GINEC	OBSTETRICĂ GINEC.	S	1,0	1,0	1,0	0,0
71	MEDIC SPECIALIST/PRIMAR		CAB. OBSTETRICĂ GINEC	OBSTETRICĂ GINEC.	S	1,0	1,0	0,0	1,0
72	ASISTENT/ASISTENT PRINCIPAL		CAB. OBSTETRICĂ GINEC	OBSTETRICĂ	PL	1,0	1,0	1,0	0,0
73	INGRIJITOR		CAB. OBSTETRICĂ GINEC	OBSTETRICĂ	PL	1,0	1,0	0,0	1,0

**CABINET OFTALMOLOGIE**

<b>APROBAT=</b>		<b>5,00 OCUPAT=</b>		<b>4,0 VACANT=</b>		<b>1,0</b>			
74	MEDIC SPECIALIST		CAB. OFTALMOLOGIE	OFTALMOLOGIE	S	1,0	1,0	1,0	0,0
75	MEDIC SPECIALIST/PRIMAR		CAB. OFTALMOLOGIE	OFTALMOLOGIE	S	1,0	1,0	1,0	0,0
76	MEDIC SPECIALIST/PRIMAR		CAB. OFTALMOLOGIE	OFTALMOLOGIE	S	1,0	1,0	1,0	0,0
77	ASISTENT/ASIST.PRINCIPAL		CAB. OFTALMOLOGIE	MEDICALA	PL	1,0	1,0	1,0	0,0
78	ASISTENT/ASIST.PRINCIPAL		CAB. OFTALMOLOGIE	MEDICALA	PL	1,0	1,0	0,0	1,0

**CABINET ORTOPEDIE**

<b>APROBAT=</b>		<b>5,00 OCUPAT=</b>		<b>4,0 VACANT=</b>		<b>1,0</b>			
79	MEDIC REZIDENT AN I		CAB. ORTOPEDIE	ORTOPEDIE	S	1,0	1,0	1,0	0,0
80	MEDIC SPECIALIST/PRIMAR		CAB. ORTOPEDIE	ORTOPEDIE	S	1,0	1,0	1,0	0,0
81	MEDIC SPECIALIST/PRIMAR		CAB. ORTOPEDIE	ORTOPEDIE	S	1,0	1,0	1,0	0,0
82	ASISTENT/ASISTENT PRINCIPAL		CAB. ORTOPEDIE	MEDICALA	PL	1,0	1,0	1,0	0,0
83	ASISTENT/ASISTENT PRINCIPAL		CAB. ORTOPEDIE	MEDICALA	PL	1,0	1,0	0,0	1,0

**CABINET PEDIATRIE****APROBAT=****4,00 OCUPAT=****4,0 VACANT=****0,0**

84	MEDIC REZIDENT AN II	CAB. PEDIATRIE	PEDIATRIE	S	1,0	1,0	1,0	0,0
85	MEDIC SPECIALIST/PRIMAR	CAB. PEDIATRIE	PEDIATRIE	S	1,0	1,0	1,0	0,0
86	ASISTENT/ASIST.PRINCIPAL	CAB. PEDIATRIE	PEDIATRIE	PL	1,0	1,0	1,0	0,0
87	ASISTENT/ASIST.PRINCIPAL	CAB. PEDIATRIE	PEDIATRIE	PL	1,0	1,0	1,0	0,0

**CABINET PLANIFICARE FAMILIALĂ****APROBAT=****2,00 OCUPAT=****2,0 VACANT=****0,0**

88	MEDIC SPECIALIST	CAB. PLANIFICARE FAM.	OBSTETRICA GINEC.	S	1,0	1,0	1,0	0,0
89	ASISTENT/AS. PRINCIPAL	CAB. PLANIFICARE FAM.	OBSTETRICA GINEC.	PL	1,0	1,0	1,0	0,0

**CABINET PSIHIATRIE****APROBAT=****3,00 OCUPAT=****1,0 VACANT=****2,0**

90	MEDIC SPECIALIST/PRIMAR	CAB. PSIHIATRIE	PSIHIATRIE	S	1,0	1,0	0,0	1,0
91	MEDIC REZIDENT AN IV	CAB. PSIHIATRIE	PSIHIATRIE	S	1,0	1,0	1,0	0,0
92	ASISTENT/ASIST.PRINCIPAL	CAB. PSIHIATRIE	MEDICALA	PL	1,0	1,0	0,0	1,0

**CABINET UROLOGIE****APROBAT=****4,00 OCUPAT=****3,0 VACANT=****1,0**

93	MEDIC SPECIALIST/PRIMAR	CAB. UROLOGIE	UROLOGIE	S	1,0	1,0	1,0	0,0
94	MEDIC SPECIALIST/PRIMAR	CAB. UROLOGIE	UROLOGIE	S	1,0	1,0	1,0	0,0
95	ASISTENT/ASIST.PRINCIPAL	CAB. UROLOGIE	GENERAL	PL	1,0	1,0	1,0	0,0
96	ASISTENT/ASIST.PRINCIPAL	CAB. UROLOGIE	GENERAL	PL	1,0	1,0	0,0	1,0

**CABINET B.F.T.****APROBAT=****2,00 OCUPAT=****2,0 VACANT=****0,0**

97	MEDIC PRIMAR/SPECIALIST	CABINET BFT	BFT	S	1,0	1,0	1,0	0,0
98	ASISTENT/ASIST.PRINCIPAL	CABINET BFT	GENERAL	PL	1,0	1,0	1,0	0,0

**CABINET PNEUMOLOGIE****APROBAT=****2,00 OCUPAT=****0,0 VACANT=****2,0**

99	MEDIC PRIMAR/SPECIALIST	CABINET PNEUMOLOGIE	PNEUMOLOGIE	S	1,0	1,0	0,0	1,0
100	ASISTENT/ASIST.PRINCIPAL	CABINET PNEUMOLOGIE	GENERAL	PL	1,0	1,0	0,0	1,0

**CABINET CHIRURGIE CARDIOVASCULARA****APROBAT=****2,00 OCUPAT=****0,0 VACANT=****2,0**

101	MEDIC PRIMAR/SPECIALIST	CABINET CHIRURGIE CARDIOVASCULARA	CHIRURGIE CARDIOVASCULARA	S	1,0	1,0	0,0	1,0
102	ASISTENT/ASIST.PRINCIPAL	CABINET CHIRURGIE CARDIOVASCULARA	GENERAL	PL	1,0	1,0	0,0	1,0

**CABINET A.T.I.****APROBAT=****2,00 OCUPAT=****0,0 VACANT=****2,0**

103	MEDIC PRIMAR/SPECIALIST	CABINET A.T.I.	A.T.I.	S	1,0	1,0	0,0	1,0
104	ASISTENT/ASIST.PRINCIPAL	CABINET A.T.I.	GENERAL	PL	1,0	1,0	0,0	1,0

**CABINET CHIRURGIE VASCULARA****APROBAT=****2,00 OCUPAT=****0,0 VACANT=****2,0**

105	MEDIC PRIMAR/SPECIALIST	CABINET CHIRURGIE VASCULARA	CHIRURGIE VASCULARA	S	1,0	1,0	0,0	1,0
106	ASISTENT/ASIST.PRINCIPAL	CABINET CHIRURGIE VASCULARA	GENERAL	PL	1,0	1,0	0,0	1,0

**CABINET REUMATOLOGIE****APROBAT=****2,00 OCUPAT=****0,0 VACANT=****2,0**

107	MEDIC PRIMAR/SPECIALIST	CABINET REUMATOLOGIE	REUMATOLOGIE	S	1,0	1,0	0,0	1,0
108	ASISTENT/ASIST.PRINCIPAL	CABINET REUMATOLOGIE	GENERAL	PL	1,0	1,0	0,0	1,0

**CAMERA DE GARDĂ**

<b>APROBAT=</b>		<b>22,00 OCUPAT=</b>	<b>15,0 VACANT=</b>		<b>7,0</b>			
109	MEDIC REZIDENT AN I	CAMERA DE GARDA	URGENTA	S	1,0	1,0	1,0	0,0
110	MEDIC SPECIALIST/PRIMAR/MEDIC	CAMERA DE GARDA	URGENTA	S	1,0	1,0	0,0	1,0
111	MEDIC SPECIALIST/PRIMAR	CAMERA DE GARDA	MEDICINA DE FAMILIE	S	1,0	1,0	0,0	1,0
112	MEDIC SPECIALIST/PRIMAR	CAMERA DE GARDA	MEDICINA GENERALA	S	1,0	1,0	0,0	1,0
113	ASISTENT/ASIST.PRINCIPAL	CAMERA DE GARDA	MEDICALA	M	1,0	1,0	0,0	1,0
114	ASISTENT/ASIST.PRINCIPAL	CAMERA DE GARDA	MEDICALA	PL	1,0	1,0	1,0	0,0
115	ASISTENT/ASIST.PRINCIPAL	CAMERA DE GARDA	MEDICALA	PL	1,0	1,0	1,0	0,0
116	ASISTENT/ASIST.PRINCIPAL	CAMERA DE GARDA	MEDICALA	PL	1,0	1,0	1,0	0,0
117	ASISTENT/ASIST.PRINCIPAL	CAMERA DE GARDA	MEDICALA	PL	1,0	1,0	1,0	0,0
118	ASISTENT/ASIST.PRINCIPAL	CAMERA DE GARDA	MEDICALA	PL	1,0	1,0	1,0	0,0
119	ASISTENT/ASIST.PRINCIPAL	CAMERA DE GARDA	MEDICALA	PL	1,0	1,0	1,0	0,0
120	ASISTENT/ASIST.PRINCIPAL	CAMERA DE GARDA	MEDICALA	PL	1,0	1,0	1,0	0,0
121	ASISTENT/ASIST.PRINCIPAL	CAMERA DE GARDA	MEDICALA	PL	1,0	1,0	1,0	0,0
122	INFIRMIER	CAMERA DE GARDA	ALTA SPECIALITATE	G	1,0	1,0	1,0	0,0
123	INFIRMIER	CAMERA DE GARDA	ALTA SPECIALITATE	G	1,0	1,0	1,0	0,0
124	INFIRMIER	CAMERA DE GARDA	ALTA SPECIALITATE	G	1,0	1,0	1,0	0,0
125	INFIRMIER	CAMERA DE GARDA	ALTA SPECIALITATE	G	1,0	1,0	0,0	1,0
126	INFIRMIERA	CAMERA DE GARDA	ALTA SPECIALITATE	M	1,0	1,0	0,0	1,0
127	INGRIJITOR	CAMERA DE GARDA	ALTA SPECIALITATE	M	1,0	1,0	1,0	0,0
128	BRANCARDIER	CAMERA DE GARDA	ALTA SPECIALITATE	G	1,0	1,0	0,0	1,0
129	GARDEROBIER	CAMERA DE GARDA	ALTA SPECIALITATE	M	1,0	1,0	1,0	0,0
130	REGISTRATOR MED,CLS 47-GR5-	CAMERA DE GARDA	ALTA SPECIALITATE	M	1,0	1,0	1,0	0,0

**BIROU INTERNĂRI-EXTERNĂRI**

<b>APROBAT=</b>		<b>2,00 OCUPAT=</b>	<b>2,0 VACANT=</b>		<b>0,0</b>			
131	REGISTRATOR MED,CLS 47-GR5-	BIROU INTERNARI / EXTERNARI	ALTA SPECIALITATE	M	1,0	1,0	1,0	0,0
132	ASISTENT/ASIST.PRINCIPAL	BIROU INTERNARI / EXTERNARI	MEDICALA	M	1,0	1,0	1,0	0,0

**SECTIE CHIRURGIE**

<b>APROBAT=</b>		<b>31,00 OCUPAT=</b>	<b>12,0 VACANT=</b>		<b>19,0</b>			
133	MEDIC SEF SECTIE	COMP. CHIRURGIE GEN.	CHIRURGIE GEN.	S	1,0	1,0	0,0	1,0
134	MEDIC SPECIALIST/PRIMAR	COMP. CHIRURGIE GEN.	CHIRURGIE GEN.	S	1,0	1,0	1,0	0,0
135	MEDIC SPECIALIST/PRIMAR	COMP. ORL	ORL	S	1,0	1,0	1,0	0,0
136	MEDIC REZIDENT AN I	COMP. O.R.L.	O.R.L.	S	1,0	1,0	1,0	0,0
137	MEDIC SPECIALIST/PRIMAR	COMP. CHIRURGIE GEN.	CHIRURGIE GEN.	S	1,0	1,0	1,0	0,0
138	MEDIC SPECIALIST/PRIMAR	COMP. CHIRURGIE GEN.	CHIRURGIE GEN.	S	1,0	1,0	0,0	1,0
139	MEDIC SPECIALIST/PRIMAR	COMP. CHIRURGIE GEN.	CHIRURGIE GEN.	S	1,0	1,0	0,0	1,0
140	MEDIC SPECIALIST/PRIMAR	COMP. CHIRURGIE VASCULARA	CHIRURGIE VASCULARA	S	1,0	1,0	0,0	1,0
141	MEDIC SPECIALIST/PRIMAR	COMP. CHIRURGIE PLASTICA, ESTETICA SI MICROCHIRURGIE RECONSTRUCTIVA	CHIRURGIE PLASTICĂ	S	1,0	1,0	0,0	1,0
142	MEDIC SPECIALIST/PRIMAR	COMP. ORTOPIEDIE	ORTOPIEDIE	S	1,0	1,0	0,0	1,0
143	MEDIC SPECIALIST/PRIMAR	COMP. UROLOGIE	UROLOGIE	S	1,0	1,0	0,0	1,0
144	MEDIC SPECIALIST/PRIMAR	COMP. OBSTETRICA-GINECOLOGIE	OBSTETRICA-GINECOLOGIE	S	1,0	1,0	0,0	1,0
145	ASISTENT SEF	COMP. CHIRURGIE GEN.	MEDICALA	PL	1,0	1,0	1,0	0,0
146	ASISTENT/ASIST.PRINCIPAL	COMP. CHIRURGIE GEN.	MEDICALA	PL	1,0	1,0	1,0	0,0
147	ASISTENT/ASIST.PRINCIPAL	COMP. CHIRURGIE GEN.	MEDICALA	PL	1,0	1,0	1,0	0,0
148	ASISTENT/ASIST.PRINCIPAL	COMP. CHIRURGIE GEN.	MEDICALA	PL	1,0	1,0	0,0	1,0
149	ASISTENT/ASIST.PRINCIPAL	COMP. CHIRURGIE GEN.	MEDICALA	PL	1,0	1,0	0,0	1,0
150	ASISTENT/ASIST.PRINCIPAL	COMP. CHIRURGIE GEN.	MEDICALA	PL	1,0	1,0	0,0	1,0

151	ASISTENT/ASIST.PRINCIPAL	COMP. CHIRURGIE GEN.	MEDICALA	PL	1,0	1,0	0,0	1,0
152	ASISTENT/ASIST.PRINCIPAL	COMP. CHIRURGIE GEN.	MEDICALA	PL	1,0	1,0	0,0	1,0
153	ASISTENT/ASIST.PRINCIPAL	COMP. CHIRURGIE GEN.	MEDICALA	PL	1,0	1,0	0,0	1,0
154	ASISTENT/ASIST.PRINCIPAL	COMP. CHIRURGIE GEN.	MEDICALA	PL	1,0	1,0	0,0	1,0
155	ASISTENT/ASIST.PRINCIPAL	COMP. CHIRURGIE GEN.	MEDICALA	PL	1,0	1,0	0,0	1,0
156	ASISTENT/ASIST.PRINCIPAL	COMP. CHIRURGIE GEN.	MEDICALA	PL	1,0	1,0	0,0	1,0
157	INFIRMIERA	COMP. CHIRURGIE GEN.	ALTA SPECIALITATE	M	1,0	1,0	1,0	0,0
158	INFIRMIERA	COMP. CHIRURGIE GEN.	ALTA SPECIALITATE	M	1,0	1,0	1,0	0,0
159	INFIRMIERA	COMP. CHIRURGIE GEN.	ALTA SPECIALITATE	M	1,0	1,0	1,0	0,0
160	INFIRMIERA	COMP. CHIRURGIE GEN.	ALTA SPECIALITATE	M	1,0	1,0	1,0	0,0
161	INFIRMIERA	COMP. CHIRURGIE GEN.	ALTA SPECIALITATE	G	1,0	1,0	0,0	1,0
162	INGRIJITOR	COMP. CHIRURGIE GEN.	ALTA SPECIALITATE	G	1,0	1,0	1,0	0,0
163	INGRIJITOR	COMP. CHIRURGIE GEN.	ALTA SPECIALITATE	G	1,0	1,0	0,0	1,0

**SECTIE NEUROLOGIE**

**APROBAT=**

**39,00 OCUPAT=**

**14,0 VACANT=**

**25,0**

164	SEF SECTIE	COMP. NEUROLOGIE	NEUROLOGIE	S	1,0	1,0	0,0	1,0
165	MEDIC SPECIALIST/PRIMAR	COMP. NEUROLOGIE	NEUROLOGIE	S	1,0	1,0	1,0	0,0
166	MEDIC SPECIALIST / PRIMAR	COMP. NEUROLOGIE	NEUROLOGIE	S	1,0	1,0	0,0	1,0
167	MEDIC REZIDENT AN I	COMP. NEUROLOGIE	NEUROLOGIE	S	1,0	1,0	1,0	0,0
168	MEDIC SPECIALIST/PRIMAR	COMP. RECUPERARE NEUROLOGICA	B.F.T.	S	1,0	1,0	1,0	0,0
169	KINETOTERAPEUT	COMP. RECUPERARE NEUROLOGICA	B.F.T.	S	1,0	1,0	0,0	1,0
170	PSIHOLOG	COMP. NEUROLOGIE	PSIHOLOGIE	S	1,0	1,0	0,0	1,0
171	ASISTENT SEF	COMP. NEUROLOGIE	MEDICALA	PL	1,0	1,0	1,0	0,0
172	ASISTENT/ASIST.PRINCIPAL	COMP. NEUROLOGIE	MEDICALA	PL	1,0	1,0	1,0	0,0
173	ASISTENT/ASIST.PRINCIPAL	COMP. NEUROLOGIE	MEDICALA	PL	1,0	1,0	1,0	0,0
174	ASISTENT/ASIST.PRINCIPAL	COMP. NEUROLOGIE	MEDICALA	PL	1,0	1,0	1,0	0,0
175	ASISTENT/ASIST.PRINCIPAL	COMP. NEUROLOGIE	MEDICALA	PL	1,0	1,0	1,0	0,0
176	ASISTENT/ASIST.PRINCIPAL	COMP. NEUROLOGIE	MEDICALA	PL	1,0	1,0	1,0	0,0
177	ASISTENT/ASIST.PRINCIPAL	COMP. NEUROLOGIE	MEDICALA	PL	1,0	1,0	0,0	1,0
178	ASISTENT/ASIST.PRINCIPAL	COMP. NEUROLOGIE	MEDICALA	PL	1,0	1,0	0,0	1,0
179	ASISTENT/ASIST.PRINCIPAL	COMP. NEUROLOGIE	MEDICALA	PL	1,0	1,0	0,0	1,0
180	ASISTENT/ASIST.PRINCIPAL	COMP. NEUROLOGIE	MEDICALA	PL	1,0	1,0	0,0	1,0
181	ASISTENT/ASIST.PRINCIPAL	COMP. NEUROLOGIE	MEDICALA	PL	1,0	1,0	0,0	1,0
182	ASISTENT/ASIST.PRINCIPAL	COMP. NEUROLOGIE	MEDICALA	PL	1,0	1,0	0,0	1,0
183	ASISTENT/ASIST.PRINCIPAL	COMP. NEUROLOGIE	MEDICALA	PL	1,0	1,0	0,0	1,0
184	ASISTENT/ASIST.PRINCIPAL	COMP. NEUROLOGIE	MEDICALA	PL	1,0	1,0	0,0	1,0
185	ASISTENT/ASIST.PRINCIPAL	COMP. NEUROLOGIE	MEDICALA	PL	1,0	1,0	0,0	1,0
186	INFIRMIERA	COMP. NEUROLOGIE	ALTA SPECIALITATE	M	1,0	1,0	1,0	0,0
187	INFIRMIERA	COMP. NEUROLOGIE	ALTA SPECIALITATE	M	1,0	1,0	1,0	0,0
188	INFIRMIERA	COMP. NEUROLOGIE	ALTA SPECIALITATE	M	1,0	1,0	1,0	0,0
189	INFIRMIERA	COMP. NEUROLOGIE	ALTA SPECIALITATE	M	1,0	1,0	1,0	0,0
190	INFIRMIERA	COMP. NEUROLOGIE	ALTA SPECIALITATE	M	1,0	1,0	0,0	1,0
191	INFIRMIERA	COMP. NEUROLOGIE	ALTA SPECIALITATE	M	1,0	1,0	0,0	1,0
192	INFIRMIERA	COMP. NEUROLOGIE	ALTA SPECIALITATE	M	1,0	1,0	0,0	1,0
193	INFIRMIERA	COMP. NEUROLOGIE	ALTA SPECIALITATE	M	1,0	1,0	0,0	1,0
194	INFIRMIERA	COMP. NEUROLOGIE	ALTA SPECIALITATE	M	1,0	1,0	0,0	1,0
195	INFIRMIERA	COMP. NEUROLOGIE	ALTA SPECIALITATE	M	1,0	1,0	0,0	1,0
196	INFIRMIERA	COMP. NEUROLOGIE	ALTA SPECIALITATE	M	1,0	1,0	0,0	1,0
197	INFIRMIERA	COMP. NEUROLOGIE	ALTA SPECIALITATE	M	1,0	1,0	0,0	1,0
198	INFIRMIERA	COMP. NEUROLOGIE	ALTA SPECIALITATE	M	1,0	1,0	0,0	1,0
199	INFIRMIERA	COMP. NEUROLOGIE	ALTA SPECIALITATE	M	1,0	1,0	0,0	1,0
200	INFIRMIERA	COMP. NEUROLOGIE	ALTA SPECIALITATE	M	1,0	1,0	0,0	1,0
201	INGRIJITOR	COMP. NEUROLOGIE	ALTA SPECIALITATE	G	1,0	1,0	1,0	0,0
202	INGRIJITOR	COMP. NEUROLOGIE	ALTA SPECIALITATE	G	1,0	1,0	0,0	1,0



**COMPARTIMENT PEDIATRIE**

**APROBAT=**

**18,00 OCUPAT=**

**16,0 VACANT=**

**2,0**

203	MEDIC SPECIALIST/PRIMAR	COMP. PEDIATRIE	PEDIATRIE	S	1,0	1,0	1,0	0,0
204	MEDIC SPECIALIST/PRIMAR	COMP. PEDIATRIE	PEDIATRIE	S	1,0	1,0	1,0	0,0
205	MEDIC SPECIALIST/PRIMAR	COMP. PEDIATRIE	PEDIATRIE	S	1,0	1,0	1,0	0,0
206	MEDIC REZIDENT AN I	COMP. PEDIATRIE	PEDIATRIE	S	1,0	1,0	1,0	0,0
207	MEDIC REZIDENT AN II	COMP. PEDIATRIE	PEDIATRIE	S	1,0	1,0	1,0	0,0
208	ASISTENT/ASIST.PRINCIPAL	COMP. PEDIATRIE	PEDIATRIE	PL	1,0	1,0	1,0	0,0
209	ASISTENT/ASIST.PRINCIPAL	COMP. PEDIATRIE	PEDIATRIE	PL	1,0	1,0	1,0	0,0
210	ASISTENT/ASIST.PRINCIPAL	COMP. PEDIATRIE	PEDIATRIE	PL	1,0	1,0	1,0	0,0
211	ASISTENT/ASIST.PRINCIPAL	COMP. PEDIATRIE	PEDIATRIE	PL	1,0	1,0	1,0	0,0
212	ASISTENT/ASIST.PRINCIPAL	COMP. PEDIATRIE	PEDIATRIE	S	1,0	1,0	1,0	0,0
213	ASISTENT/ASIST.PRINCIPAL	COMP. PEDIATRIE	PEDIATRIE	PL	1,0	1,0	1,0	0,0
214	ASISTENT/ASIST.PRINCIPAL	COMP. PEDIATRIE	PEDIATRIE	PL	1,0	1,0	0,0	1,0
215	INFIRMIERA	COMP. PEDIATRIE	ALTA SPECIALITATE	M	1,0	1,0	1,0	0,0
216	INFIRMIERA	COMP. PEDIATRIE	ALTA SPECIALITATE	M	1,0	1,0	1,0	0,0
217	INFIRMIERA	COMP. PEDIATRIE	ALTA SPECIALITATE	M	1,0	1,0	1,0	0,0
218	INFIRMIERA	COMP. PEDIATRIE	ALTA SPECIALITATE	M	1,0	1,0	0,0	1,0
219	INGRIJITOARE	COMP. PEDIATRIE	ALTA SPECIALITATE	M	1,0	1,0	1,0	0,0
220	INGRIJITOARE	COMP. PEDIATRIE	ALTA SPECIALITATE	G	1,0	1,0	1,0	0,0

**COMPARTIMENT PIAAM**

**APROBAT=**

**6,00 OCUPAT=**

**6,0 VACANT=**

**0,0**

221	MEDIC SPECIALIST/PRIMAR	COMP.SPIAAM	EPIDEMIOLOGIE	S	1,0	1,0	1,0	0,0
222	MEDIC REZIDENT AN I	COMP.SPIAAM	EPIDEMIOLOGIE	S	1,0	1,0	1,0	0,0
223	INFIRMIER D.D.D.	COMP.SPIAAM	IGIENA	G	1,0	1,0	1,0	0,0
224	ASISTENT/ASIST.PRINCIPAL	COMP.SPIAAM	IGIENA	PL	1,0	1,0	1,0	0,0
225	MEDIC SPECIALIST/PRIMAR	COMP.SPIAAM	BOLI INFECTIOASE	S	1,0	1,0	1,0	0,0
226	ASISTENT PRINCIPAL	COMP.SPIAAM	BOLI INFECTIOASE	S	1,0	1,0	1,0	0,0

**COMPARTIMENT A.T.I./UTS**

**APROBAT=**

**20,00 OCUPAT=**

**15,0 VACANT=**

**5,0**

227	MEDIC REZIDENT AN III	COMPARTIMENT A.T.I.	A.T.I.	S	1,0	1,0	1,0	0,0
228	MEDIC ȘEF SECTIE	COMPARTIMENT A.T.I.	A.T.I.	S	1,0	1,0	0,0	1,0
229	MEDIC SPECIALIST/PRIMAR	COMPARTIMENT A.T.I.	A.T.I.	S	1,0	1,0	1,0	0,0
230	MEDIC SPECIALIST/PRIMAR	COMPARTIMENT A.T.I.	A.T.I.	S	1,0	1,0	1,0	0,0
231	MEDIC SPECIALIST/PRIMAR	COMPARTIMENT A.T.I./UTS	A.T.I.	S	1,0	1,0	1,0	0,0
232	ASIST.PRINCIPAL ȘEF	COMPARTIMENT A.T.I.	MEDICALA	PL	1,0	1,0	0,0	1,0
233	ASISTENT/ASIST.PRINCIPAL	COMPARTIMENT A.T.I.	MEDICALA	PL	1,0	1,0	1,0	0,0
234	ASISTENT/ASIST.PRINCIPAL	COMPARTIMENT A.T.I.	MEDICALA	PL	1,0	1,0	1,0	0,0
235	ASISTENT/ASIST.PRINCIPAL	COMPARTIMENT A.T.I.	MEDICALA	PL	1,0	1,0	1,0	0,0
236	ASISTENT/ASIST.PRINCIPAL	COMPARTIMENT A.T.I.	MEDICALA	PL	1,0	1,0	1,0	0,0
237	ASISTENT/ASIST.PRINCIPAL	COMPARTIMENT A.T.I./UTS	MEDICALA	PL	1,0	1,0	1,0	0,0
238	ASISTENT/ASIST.PRINCIPAL	COMPARTIMENT A.T.I.	MEDICALA	PL	1,0	1,0	1,0	0,0
239	BIOINGINER MEDICAL DEB/BIOINGINER MED.	COMPARTIMENT A.T.I.	MEDICALA	PL	1,0	1,0	1,0	0,0
240	INFIRMIERA	COMPARTIMENT A.T.I.	A.T.I.	M	1,0	1,0	1,0	0,0
241	INFIRMIERA	COMPARTIMENT A.T.I.	A.T.I.	M	1,0	1,0	1,0	0,0
242	INFIRMIERA	COMPARTIMENT A.T.I.	A.T.I.	M	1,0	1,0	1,0	0,0
243	INFIRMIERA	COMPARTIMENT A.T.I.	A.T.I.	M	1,0	1,0	0,0	1,0
244	INFIRMIERA	COMPARTIMENT A.T.I.	ALTA SPECIALITATE	M	1,0	1,0	0,0	1,0
245	INGRIJITOR	COMPARTIMENT A.T.I.	ALTA SPECIALITATE	G	1,0	1,0	1,0	0,0
246	BRANCARDIER	COMPARTIMENT A.T.I.	ALTA SPECIALITATE	G	1,0	1,0	0,0	1,0

**FARMACIE**

<b>APROBAT=</b>		<b>6,00 OCUPAT=</b>		<b>5,0 VACANT=</b>		<b>1,0</b>		
247	FARMACIST ȘEF	FARMACIE	FARMACIE	S	1,0	1,0	0,0	1,0
248	FARMACIST	FARMACIE	FARMACIE	S	1,0	1,0	1,0	0,0
249	ASISTENT PRINCIPAL FARMACIE	FARMACIE	FARMACIE	PL	1,0	1,0	1,0	0,0
250	ASISTENT PRINCIPAL FARMACIE	FARMACIE	FARMACIE	PL	1,0	1,0	1,0	0,0
251	ASISTENT PRINCIPAL FARMACIE	FARMACIE	FARMACIE	PL	1,0	1,0	1,0	0,0
252	INGRIJITOR	FARMACIE	ALTA SPECIALITATE	G	1,0	1,0	1,0	0,0

**LABORATOR ANALIZE MEDICALE**

<b>APROBAT=</b>		<b>12,00 OCUPAT=</b>		<b>12,0 VACANT=</b>		<b>0,0</b>		
253	MEDIC PRIMAR/SPECIALIST	LB. ANALIZE MEDICALE	LABORATOR	S	1,0	1,0	1,0	0,0
254	MEDIC SPECIALIST/PRIMAR	LB. ANALIZE MEDICALE	LABORATOR	S	1,0	1,0	1,0	0,0
255	MEDIC REZIDENT AN I	LB. ANALIZE MEDICALE	LABORATOR	S	1,0	1,0	1,0	0,0
256	MEDIC SPECIALIST/PRIMAR	LB. ANALIZE MEDICALE	LABORATOR	S	1,0	1,0	1,0	0,0
257	CHIMIST PRINCIPAL	LB. ANALIZE MEDICALE	CHIMIE	S	1,0	1,0	1,0	0,0
258	CHIMIST /CHIMIST SPECIALIST	LB. ANALIZE MEDICALE	CHIMIE	S	1,0	1,0	1,0	0,0
259	ASISTENT/ASIST.PRINCIPAL	LB. ANALIZE MEDICALE	LABORATOR	PL	1,0	1,0	1,0	0,0
260	ASISTENT/ASIST.PRINCIPAL	LB. ANALIZE MEDICALE	MEDICALA	PL	1,0	1,0	1,0	0,0
261	ASISTENT/ASIST.PRINCIPAL	LB. ANALIZE MEDICALE	LABORATOR	S	1,0	1,0	1,0	0,0
262	BIOLOG SPECIALIST	LB. ANALIZE MEDICALE	BIOLOGIE	S	1,0	1,0	1,0	0,0
263	BIOLOG SPECIALIST	LB. ANALIZE MEDICALE	BIOLOGIE	S	1,0	1,0	1,0	0,0
264	INGRIJITOR	LB. ANALIZE MEDICALE	ALTA SPECIALITATE	G	1,0	1,0	1,0	0,0

**LABORATOR RADIOLOGIE ȘI IMAGISTICĂ MEDICALĂ**

<b>APROBAT=</b>		<b>16,00 OCUPAT=</b>		<b>12,0 VACANT=</b>		<b>4,0</b>		
265	MEDIC PRIMAR/SPECIALIST	LB. RADIOLOGIE,IMAGISTICA	RADIOLOGIE	S	1,0	1,0	1,0	0,0
266	MEDIC PRIMAR/SPECIALIST	LB. RADIOLOGIE,IMAGISTICA	RADIOLOGIE	S	1,0	1,0	0,0	1,0
267	MEDIC SPECIALIST/PRIMAR	LB. RADIOLOGIE,IMAGISTICA	RADIOLOGIE	S	1,0	1,0	0,0	1,0
268	MEDIC PRIMAR/SPECIALIST	LB. RADIOLOGIE,IMAGISTICA	RADIOLOGIE	S	1,0	1,0	1,0	0,0
269	MEDIC REZIDENT AN II	LB. RADIOLOGIE,IMAGISTICA	RADIOLOGIE	S	1,0	1,0	1,0	0,0
270	MEDIC PRIMAR/SPECIALIST	LB. RADIOLOGIE,IMAGISTICA	RADIOLOGIE	S	1,0	1,0	1,0	0,0
271	MEDIC REZIDENT AN I	LB. RADIOLOGIE,IMAGISTICA	RADIOLOGIE	S	1,0	1,0	1,0	0,0
272	FIZICIAN PRINCIPAL	LB. RADIOLOGIE,IMAGISTICA	RADIOLOGIE	S	1,0	1,0	1,0	0,0
273	ASISTENT/ASIST.PRINCIPAL	LB. RADIOLOGIE,IMAGISTICA	MEDICALA	PL	1,0	1,0	1,0	0,0
274	ASISTENT/ASIST.PRINCIPAL	LB. RADIOLOGIE,IMAGISTICA	MEDICALA	PL	1,0	1,0	1,0	0,0
275	ASISTENT/ASIST.PRINCIPAL	LB. RADIOLOGIE,IMAGISTICA	MEDICALA	PL	1,0	1,0	1,0	0,0
276	ASISTENT/ASIST.PRINCIPAL	LB. RADIOLOGIE,IMAGISTICA	MEDICALA	PL	1,0	1,0	1,0	0,0
277	ASISTENT/ASIST.PRINCIPAL	LB. RADIOLOGIE,IMAGISTICA	RADIOLOGIE	PL	1,0	1,0	1,0	0,0
278	ASISTENT/ASIST.PRINCIPAL	LB. RADIOLOGIE,IMAGISTICA	MEDICALA	PL	1,0	1,0	1,0	0,0
279	BIOINGINER MEDICAL DEB/BIOINGINER MED.	LB. RADIOLOGIE,IMAGISTICA	MEDICALA	PL	1,0	1,0	0,0	1,0
280	INGRIJITOR	LB. RADIOLOGIE,IMAGISTICA	RADIOLOGIE	M	1,0	1,0	0,0	1,0

**LABORATOR BFT (BAZĂ TRATAMENT)**

<b>APROBAT=</b>		<b>7,00 OCUPAT=</b>		<b>7,0 VACANT=</b>		<b>0,0</b>		
281	KINETOTERAPEUT PRINCIPAL	LB.BFT (Baza tratament)	KINETOTERAPEUT	S	1,0	1,0	1,0	0,0
282	ASISTENT/ASIST.PRINCIPAL	LB.BFT (Baza tratament)	MEDICALA	PL	1,0	1,0	1,0	0,0
283	ASISTENT/ASIST.PRINCIPAL	LB.BFT (Baza tratament)	BFT	PL	1,0	1,0	1,0	0,0
284	ASISTENT/ASIST.PRINCIPAL	LB.BFT (Baza tratament)	BFT	PL	1,0	1,0	1,0	0,0
285	ASISTENT/ASIST.PRINCIPAL	LB.BFT (Baza tratament)	BFT	PL	1,0	1,0	1,0	0,0
286	MASEUR DEBUTANT	LB.BFT (Baza tratament)	BFT	PL	1,0	1,0	1,0	0,0
287	INGRIJITOR	LB.BFT (Baza tratament)	ALTA SPECIALITATE	G	1,0	1,0	1,0	0,0

**SECȚIA MEDICINĂ INTERNĂ**

<b>APROBAT=</b>		<b>52,00 OCUPAT=</b>		<b>46,0 VACANT=</b>		<b>6,0</b>		
288	MEDIC PRIMAR - SEF SECȚIE	SECȚIA MEDICINA INTERNA	MEDICINA INTERNA	S	1,0	1,0	0,0	1,0
289	MEDIC SPECIALIST/PRIMAR	SECȚIA MEDICINA INTERNA	MEDICINA INTERNA	S	1,0	1,0	1,0	0,0
290	MEDIC SPECIALIST/PRIMAR	SECȚIA MEDICINA INTERNA	MEDICINA INTERNA	S	1,0	1,0	1,0	0,0
291	MEDIC SPECIALIST/PRIMAR	SECȚIA MEDICINA INTERNA	MEDICINA INTERNA	S	1,0	1,0	1,0	0,0
292	MEDIC SPECIALIST/PRIMAR	SECȚIA MEDICINA INTERNA	MEDICINA INTERNA	S	1,0	1,0	1,0	0,0
293	MEDIC PRIMAR/SPECIALIST	SECȚIA MEDICINA INTERNA	MEDICINA INTERNA	S	1,0	1,0	1,0	0,0
294	MEDIC PRIMAR/SPECIALIST	SECȚIA MEDICINA INTERNA	MEDICINA INTERNA	S	1,0	1,0	0,0	1,0
295	MEDIC REZIDENT AN IV	SECȚIA MEDICINA INTERNA	MEDICINA INTERNA	S	1,0	1,0	1,0	0,0
296	MEDIC SPECIALIST/PRIMAR	SECȚIA MEDICINA INTERNA	GASTROENTEROLOGIE	S	1,0	1,0	1,0	0,0
297	MEDIC SPECIALIST/PRIMAR	SECȚIA MEDICINA INTERNA	GASTROENTEROLOGIE	S	1,0	1,0	1,0	0,0
298	MEDIC PRIMAR/SPECIALIST	COMP. CARDIOLOGIE	CARDIOLOGIE	S	1,0	1,0	0,0	1,0
299	MEDIC REZIDENT AN IV	COMP. CARDIOLOGIE	CARDIOLOGIE	S	1,0	1,0	1,0	0,0
300	MEDIC REZIDENT AN VI	COMP. CARDIOLOGIE	CARDIOLOGIE	S	1,0	1,0	0,0	1,0
301	MEDIC REZIDENT AN V	COMP. B.F.T.	B.F.T.	S	1,0	1,0	1,0	0,0
302	ASISTENT SEF	SECȚIA MEDICINA INTERNA	MEDICALA	PL	1,0	1,0	1,0	0,0
303	ASISTENT/ASIST.PRINCIPAL	SECȚIA MEDICINA INTERNA	MEDICALA	PL	1,0	1,0	1,0	0,0
304	ASISTENT/ASIST.PRINCIPAL	SECȚIA MEDICINA INTERNA	MEDICALA	PL	1,0	1,0	1,0	0,0
305	ASISTENT/ASIST.PRINCIPAL	SECȚIA MEDICINA INTERNA	MEDICALA	PL	1,0	1,0	1,0	0,0
306	ASISTENT/ASIST.PRINCIPAL	SECȚIA MEDICINA INTERNA	MEDICALA	PL	1,0	1,0	1,0	0,0
307	ASISTENT/ASIST.PRINCIPAL	SECȚIA MEDICINA INTERNA	MEDICALA	PL	1,0	1,0	1,0	0,0
308	ASISTENT/ASIST.PRINCIPAL	SECȚIA MEDICINA INTERNA	MEDICALA	PL	1,0	1,0	1,0	0,0
309	ASISTENT/ASIST.PRINCIPAL	SECȚIA MEDICINA INTERNA	MEDICALA	PL	1,0	1,0	1,0	0,0
310	ASISTENT/ASIST.PRINCIPAL	SECȚIA MEDICINA INTERNA	MEDICALA	PL	1,0	1,0	1,0	0,0
311	ASISTENT/ASIST.PRINCIPAL	SECȚIA MEDICINA INTERNA	MEDICALA	PL	1,0	1,0	1,0	0,0
312	ASISTENT DEB./ASIS./ASIST. PRINC.	SECȚIA MEDICINA INTERNA	MEDICALA	PL	1,0	1,0	1,0	0,0
313	ASISTENT/ASIST.PRINCIPAL	SECȚIA MEDICINA INTERNA	MEDICALA	PL	1,0	1,0	1,0	0,0
314	ASISTENT/ASIST.PRINCIPAL	SECȚIA MEDICINA INTERNA	MEDICALA	PL	1,0	1,0	1,0	0,0
315	ASISTENT/ASIST.PRINCIPAL	SECȚIA MEDICINA INTERNA	MEDICALA	PL	1,0	1,0	1,0	0,0
316	ASISTENT/ASIST.PRINCIPAL	SECȚIA MEDICINA INTERNA	MEDICALA	PL	1,0	1,0	1,0	0,0
317	ASISTENT/ASIST.PRINCIPAL	SECȚIA MEDICINA INTERNA	MEDICALA	PL	1,0	1,0	1,0	0,0
318	ASISTENT/ASIST.PRINCIPAL	SECȚIA MEDICINA INTERNA	MEDICALA	PL	1,0	1,0	1,0	0,0
319	ASISTENT/ASIST.PRINCIPAL	SECȚIA MEDICINA INTERNA	MEDICALA	PL	1,0	1,0	1,0	0,0
320	ASISTENT/ASIST.PRINCIPAL	SECȚIA MEDICINA INTERNA	MEDICALA	PL	1,0	1,0	1,0	0,0
321	ASISTENT/ASIST.PRINCIPAL	SECȚIA MEDICINA INTERNA	MEDICALA	PL	1,0	1,0	1,0	0,0
322	INFIRMIERA	SECȚIA MEDICINA INTERNA	ALTA SPECIALITATE	M	1,0	1,0	1,0	0,0
323	INFIRMIER	SECȚIA MEDICINA INTERNA	ALTA SPECIALITATE	M	1,0	1,0	1,0	0,0
324	INFIRMIERA	SECȚIA MEDICINA INTERNA	ALTA SPECIALITATE	M	1,0	1,0	1,0	0,0
325	INFIRMIERA	SECȚIA MEDICINA INTERNA	ALTA SPECIALITATE	M	1,0	1,0	1,0	0,0
326	INFIRMIERA	SECȚIA MEDICINA INTERNA	ALTA SPECIALITATE	M	1,0	1,0	1,0	0,0
327	INFIRMIER DEBUTANT	SECȚIA MEDICINA INTERNA	ALTA SPECIALITATE	M	1,0	1,0	1,0	0,0
328	INFIRMIERA	SECȚIA MEDICINA INTERNA	ALTA SPECIALITATE	M	1,0	1,0	1,0	0,0
329	INFIRMIERA	SECȚIA MEDICINA INTERNA	ALTA SPECIALITATE	M	1,0	1,0	1,0	0,0
330	INFIRMIERA	SECȚIA MEDICINA INTERNA	ALTA SPECIALITATE	M	1,0	1,0	1,0	0,0
331	INFIRMIER	SECȚIA MEDICINA INTERNA	ALTA SPECIALITATE	M	1,0	1,0	1,0	0,0
332	INFIRMIER	SECȚIA MEDICINA INTERNA	ALTA SPECIALITATE	M	1,0	1,0	1,0	0,0
333	INGRIJITOR	SECȚIA MEDICINA INTERNA	ALTA SPECIALITATE	G	1,0	1,0	0,0	1,0
334	INGRIJITOR	SECȚIA MEDICINA INTERNA	ALTA SPECIALITATE	G	1,0	1,0	1,0	0,0
335	INGRIJITOR	SECȚIA MEDICINA INTERNA	ALTA SPECIALITATE	G	1,0	1,0	1,0	0,0
336	INGRIJITOR	SECȚIA MEDICINA INTERNA	ALTA SPECIALITATE	G	1,0	1,0	1,0	0,0

337	INGRIJITOR		SECTIA MEDICINA INTERNA	ALTA SPECIALITATE	G	1,0	1,0	1,0	0,0
338	INGRIJITOR		SECTIA MEDICINA INTERNA	ALTA SPECIALITATE	G	1,0	1,0	0,0	1,0
339	REGISTRATOR MEDICAL		SECTIA MEDICINA INTERNA	ALTA SPECIALITATE	M	1,0	1,0	1,0	0,0

**SERVICIUL ANATOMIE PATOLOGICĂ**

<b>APROBAT=</b>		<b>4,00 OCUPAT=</b>		<b>4,0 VACANT=</b>		<b>0,0</b>			
340	MEDIC SPECIALIST/PRIMAR		SERVICIUL ANATOMIE PATOLOGICA	ANAT. PATOLOGICA	S	1,0	1,0	1,0	0,0
341	ASISTENT/ASIST.PRINCIPAL		SERVICIUL ANATOMIE PATOLOGICA	MEDICALA	S	1,0	1,0	1,0	0,0
342	INGRIJITOR		SERVICIUL ANATOMIE PATOLOGICA	ALTA SPECIALITATE	G	1,0	1,0	1,0	0,0
343	BIOLOG SPECIALIST		SERVICIUL ANATOMIE PATOLOGICA	BIOLOGIE	S	1,0	1,0	1,0	0,0

**COMPARTIMENT SPĂLĂTORIE**

<b>APROBAT=</b>		<b>2,00 OCUPAT=</b>		<b>2,0 VACANT=</b>		<b>0,0</b>			
344	SPALATOREASA		SPALATORIE	SPALATOREASA	M	1,0	1,0	1,0	0,0
345	SPALATOREASA		SPALATORIE	SPALATOREASA	M	1,0	1,0	1,0	0,0

**COMPARTIMENT SPITALIZARE DE ZI**

<b>APROBAT=</b>		<b>8,00 OCUPAT=</b>		<b>5,0 VACANT=</b>		<b>3,0</b>			
346	MEDIC PRIMAR/SPECIALIST		SPITALIZARE ZI	MEDICALA	S	1,0	1,0	0,0	1,0
347	ASISTENT/ASIST.PRINCIPAL		SPITALIZARE ZI	MEDICALA	PL	1,0	1,0	0,0	1,0
348	ASISTENT/ASIST.PRINCIPAL		SPITALIZARE ZI	MEDICALA	PL	1,0	1,0	1,0	0,0
349	ASISTENT/ASIST.PRINCIPAL		SPITALIZARE ZI	MEDICALA	PL	1,0	1,0	1,0	0,0
350	ASISTENT/ASIST.PRINCIPAL		SPITALIZARE ZI	MEDICALA	PL	1,0	1,0	1,0	0,0
351	ASISTENT/ASIST.PRINCIPAL		SPITALIZARE ZI	MEDICALA	PL	1,0	1,0	1,0	0,0
352	INFIRMIER		SPITALIZARE ZI	ALTA SPECIALITATE	M	1,0	1,0	0,0	1,0
353	INGRIJITOR		SPITALIZARE ZI	ALTA SPECIALITATE	G	1,0	1,0	1,0	0,0

**COMPARTIMENT STERILIZARE**

<b>APROBAT=</b>		<b>2,00 OCUPAT=</b>		<b>1,0 VACANT=</b>		<b>1,0</b>			
354	ASISTENT/ASIST.PRINCIPAL		STATIE STERILIZARE	IGIENA	PL	1,0	1,0	1,0	0,0
355	ASISTENT/ASIST.PRINCIPAL		STATIE STERILIZARE	MEDICALA	PL	1,0	1,0	0,0	1,0

**COMITET DIRECTOR**

<b>APROBAT=</b>		<b>3,00 OCUPAT=</b>		<b>3,0 VACANT=</b>		<b>0,0</b>			
356	MANAGER INTERIMAR		COMITETUL DIRECTOR	ALTA SPECIALITATE	S	1,0	1,0	1,0	0,0
357	DIRECTOR MEDICAL		COMITETUL DIRECTOR	MEDICALA	S	1,0	1,0	1,0	0,0
358	DIRECTOR F-CTB.		COMITETUL DIRECTOR	ALTA SPECIALITATE	S	1,0	1,0	1,0	0,0

**COMPARTIMENT AUDIT**

<b>APROBAT=</b>		<b>1,00 OCUPAT=</b>		<b>1,0 VACANT=</b>		<b>0,0</b>			
359	AUDITOR I		COMPARTIMENT AUDIT	ECONOMIST	S	1,0	1,0	1,0	0,0

**COMPARTIMENT CONTABILITATE**

<b>APROBAT=</b>		<b>3,00 OCUPAT=</b>		<b>3,0 VACANT=</b>		<b>0,0</b>			
360	ECONOMIST IA		COMP CONTABILITATE	ECONOMIST	S	1,0	1,0	1,0	0,0
361	ECONOMIST IA		COMP CONTABILITATE	ECONOMIST	S	1,0	1,0	1,0	0,0
362	ECONOMIST I		COMP CONTABILITATE	ECONOMIST	S	1,0	1,0	1,0	0,0

**COMPARTIMENT TEHNIC/PSI+SSM**

<b>APROBAT=</b>		<b>2,00 OCUPAT=</b>		<b>2,0 VACANT=</b>		<b>0,0</b>			
363	INGINER/ CADRU TEHNIC		COMP. TEHNIC/ PSI+SSM	INGINER	S	1,0	1,0	1,0	0,0
364	SUBINGINER		COMP. TEHNIC/ PSI+SSM	ALTA SPECIALITATE	S	1,0	1,0	1,0	0,0

**COMPARTIMENT ACHIZITIILE PUBLICE**

<b>APROBAT=</b>		<b>1,00 OCUPAT=</b>		<b>1,0 VACANT=</b>		<b>0,0</b>		
365	ECONOMIST I A	COMP. ACHIZITII PUBLICE	ECONOMIST	S	1,0	1,0	1,0	0,0

**COMPARTIMENT APROVIZIONARE-TRANSPORT**

<b>APROBAT=</b>		<b>2,00 OCUPAT=</b>		<b>2,0 VACANT=</b>		<b>0,0</b>		
366	MAGAZINER I	COMP. APROV, TRANSPORT	ALTA SPECIALITATE	M	1,0	1,0	1,0	0,0
367	MAGAZINER I	COMP. APROV, TRANSPORT	ALTA SPECIALITATE	M	1,0	1,0	1,0	0,0

**COMPARTIMENT GDPR**

<b>APROBAT=</b>		<b>1,00 OCUPAT=</b>		<b>1,0 VACANT=</b>		<b>0,0</b>		
368	RESPONSABIL GDPR	COMP. GDPR	JURIDIC/ECONOMIST/INGINER	S	1,0	1,0	1,0	0,0

**COMPARTIMENT INFORMATICA**

<b>APROBAT=</b>		<b>1,00 OCUPAT=</b>		<b>0,0 VACANT=</b>		<b>1,0</b>		
369	INFORMATICIAN	COMP. INFORMATICA	INFORMATICA	S	1,0	1,0	0,0	1,0

**COMPARTIMENT R.U.N.O.S.**

<b>APROBAT=</b>		<b>3,00 OCUPAT=</b>		<b>2,0 VACANT=</b>		<b>1,0</b>		
370	ECONOMIST IA	COMPARTIMENT R.U.N.O.S.	ALTA SPECIALITATE	S	1,0	1,0	1,0	0,0
371	ECONOMIST IA	COMPARTIMENT R.U.N.O.S.	ALTA SPECIALITATE	S	1,0	1,0	1,0	0,0
372	ECONOMIST IA	COMPARTIMENT R.U.N.O.S.	ALTA SPECIALITATE	S	1,0	1,0	0,0	1,0

**COMPARTIMENT ÎNTREȚINERE ȘI REPARAȚII**

<b>APROBAT=</b>		<b>16,00 OCUPAT=</b>		<b>13,0 VACANT=</b>		<b>3,0</b>		
373	MUNCITOR I	COMP. INTREȚINERE ȘI REPARAȚII	ELECTRICIAN	M	1,0	1,0	1,0	0,0
374	MUNCITOR I	COMP. INTREȚINERE ȘI REPARAȚII	ELECTRICIAN	M	1,0	1,0	1,0	0,0
375	MUNCITOR II	COMP. INTREȚINERE ȘI REPARAȚII	ELECTRICIAN	M	1,0	1,0	0,0	1,0
376	MUNCITOR IV	COMP. INTREȚINERE ȘI REPARAȚII	INSTALATOR SANITAR	M	1,0	1,0	1,0	0,0
377	MUNCITOR IV	COMP. INTREȚINERE ȘI REPARAȚII	INSTALATOR SANITAR	M	1,0	1,0	1,0	0,0
378	MUNCITOR III	COMP. INTREȚINERE ȘI REPARAȚII	ZIDAR	M	1,0	1,0	1,0	0,0
379	MUNCITOR III	COMP. INTREȚINERE ȘI REPARAȚII	LENJER	M	1,0	1,0	1,0	0,0
380	MUNCITOR I	COMP. INTREȚINERE ȘI REPARAȚII	FOCHIST	M	1,0	1,0	1,0	0,0
381	MUNCITOR I	COMP. INTREȚINERE ȘI REPARAȚII	FOCHIST	M	1,0	1,0	1,0	0,0
382	MUNCITOR I	COMP. INTREȚINERE ȘI REPARAȚII	FOCHIST	M	1,0	1,0	1,0	0,0
383	MUNCITOR I	COMP. INTREȚINERE ȘI REPARAȚII	FOCHIST	M	1,0	1,0	1,0	0,0
384	MUNCITOR IV	COMP. INTREȚINERE ȘI REPARAȚII	FOCHIST	M	1,0	1,0	0,0	1,0
385	MUNCITOR I	COMP. INTREȚINERE ȘI REPARAȚII	LACATUS MECANIC	M	1,0	1,0	1,0	0,0
386	INGRIJITOR	COMP. INTREȚINERE ȘI REPARAȚII	MUNC.NEC.SPATII VERZI	G	1,0	1,0	1,0	0,0
387	SOFER II	COMP. INTREȚINERE ȘI REPARAȚII	SOFER II	M	1,0	1,0	1,0	0,0
388	MUNCITOR I	COMP. INTREȚINERE ȘI REPARAȚII	LAB. DET. CHIMIC	M	1,0	1,0	0,0	1,0

**COMPARTIMENT JURIDIC**

<b>APROBAT=</b>		<b>1,00 OCUPAT=</b>		<b>1,0 VACANT=</b>		<b>0,0</b>		
389	CONSILIER JURIDIC	COMP. JURIDIC	CONSILIER JURIDIC	S	1,0	1,0	1,0	0,0

TOTAL POSTURI 389

din care funcții de conducere 12

389,0

271,0

118,0

PRESEDINTE DE SEDINȚĂ  
Consilier Local,  
BANU MIHAI RAZVAN



CONTRASEMNEAZĂ,  
Secretar,  
Jr. Chirila Daniela

MANAGER,

Ec. Olaru Constantin

